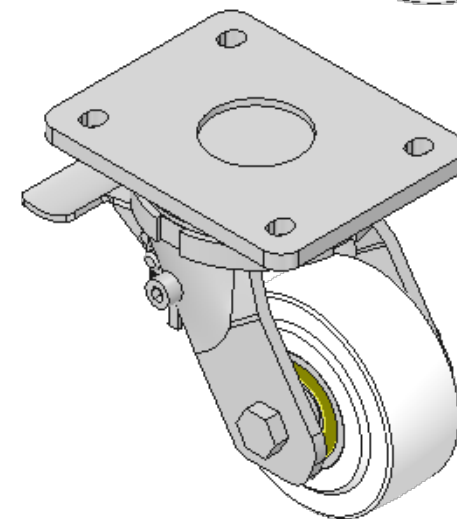
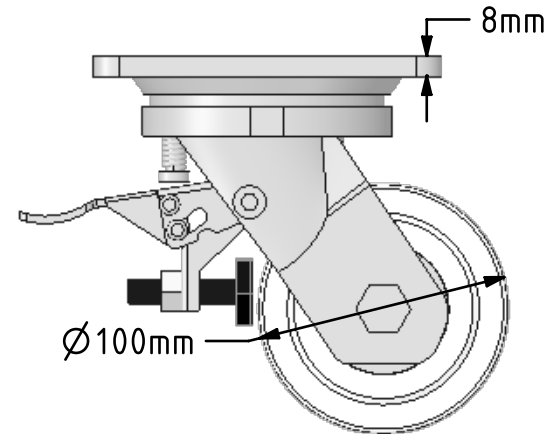
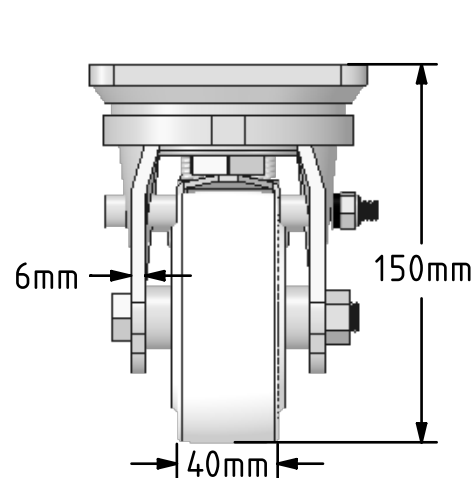
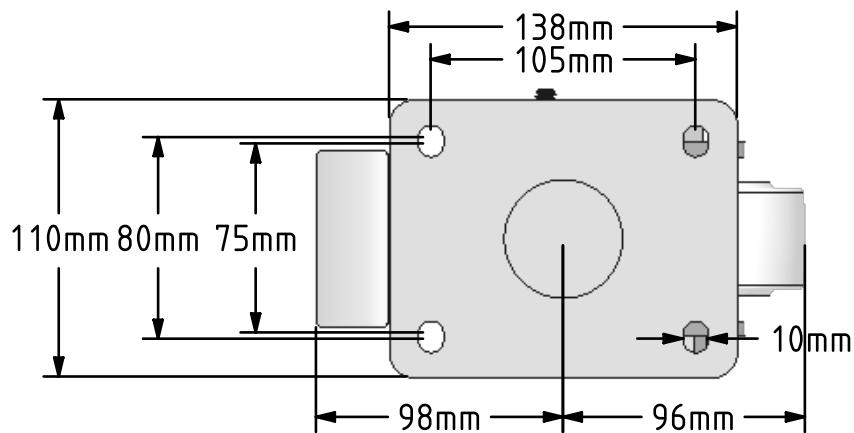


DRAWING DISCLAIMER  
 COPYRIGHT OF THIS DRAWING IS RESERVED BY BIL GROUP LTD. IT IS ISSUED ON CONDITION THAT IT IS NOT REPRODUCED, COPIED, OR DISCLOSED TO A THIRD PARTY EITHER WHOLLY OR IN PART WITHOUT THE CONSENT IN WRITING OF BIL GROUP LTD.



Description:  
 BZSAB100NYBJSWB

Fabricated zinc plated swivel castor with plate fixing fitted with a white nylon wheel with ball bearings and a total lock brake. Wheel diameter 100mm, tread width 40mm, overall height 150mm, plate size 138mm x 110mm, hole centres 105mm x 80mm/75mm. Load capacity 1250kg.



	NAME	DATE
DRAWN	Matt	23/05/18
APPROVED BY	Tim W	23/05/18
SCALE	1:3	23/05/18
WEIGHT	3.681kg	23/05/18

UNLESS OTHERWISE SPECIFIED DIMENSIONS ARE IN MILLIMETRES  
 Unspecified Tolerances  
 Machining ± 0.25mm  
 Fabrication ± 1mm

 BIL Group Ltd, Porte Marsh Road, Calne Wiltshire, SN11 9BW, United Kingdom  
 Tel +44 (0)1249 822 222 Fax: +44 (0)1249 822 300  
 www.bilgroup.co.uk

TITLE		
BZSAB100NYBJSWB		
SIZE	DWG NO.	REV
A4	BILCW03BZSAB100NYBJSWB_02	2
FILE NAME BILCW03BZSAB100NYBJSWB_02.PDF SHEET 1 OF 1		