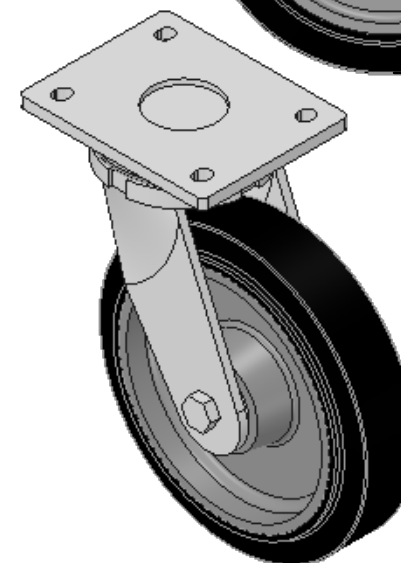
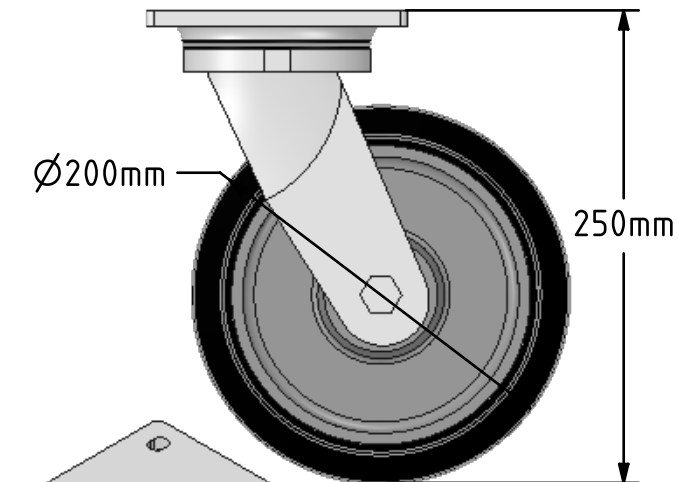
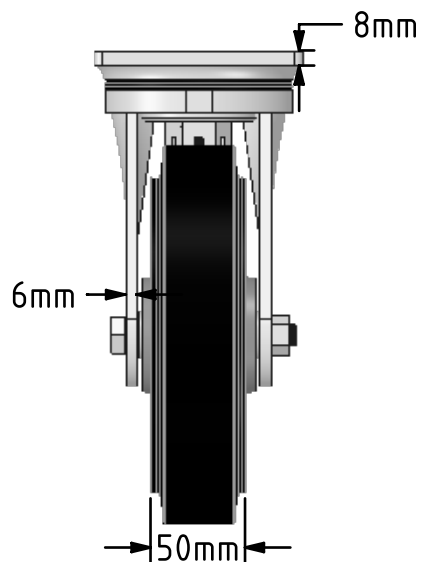
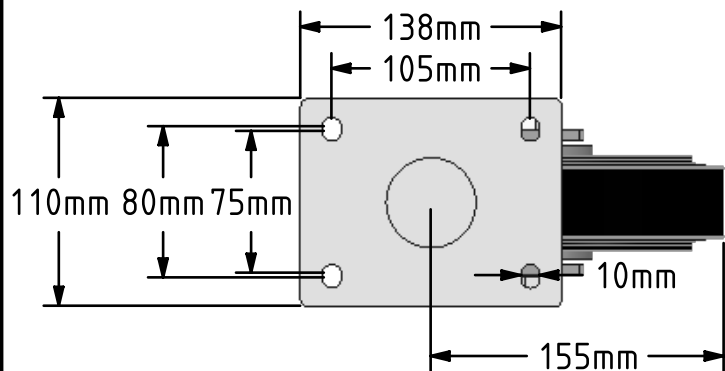


DRAWING DISCLAIMER
 COPYRIGHT OF THIS DRAWING IS RESERVED BY BIL GROUP LTD. IT IS ISSUED ON CONDITION THAT IT IS NOT REPRODUCED, COPIED, OR DISCLOSED TO A THIRD PARTY EITHER WHOLLY OR IN PART WITHOUT THE CONSENT IN WRITING OF BIL GROUP LTD.



Description:
 BZSAB200CUBJ

Fabricated zinc plated swivel castor with plate fixing fitted with a black elastic rubber tyred on a cast iron centred wheel centred wheel with ball bearings. Wheel diameter 200mm, tread width 50mm, overall height 250mm, plate size 138mm x 110mm, hole centres 105mm x 80mm/75mm. Load capacity 500kg.
 - At 6 kph speed, the load of each wheel is advised to be 80% of the load at 4kph
 - At 10 kph speed, the load of each wheel is advised to be 55% of the load at 4 kph.
 - At 16 kph speed, the load of each wheel is advised to be 45% of the load at 4kph.
 - At 20 kph speed, the load of each wheel is advised to be 35% of the load at 4 kph.
 - No data for elastic rubber wheel over 20 kph.



	NAME	DATE
DRAWN	Matt	30/05/18
APPROVED BY	Chris	30/05/18
SCALE	1:4	30/05/18
WEIGHT	6.495kg	30/05/18

BIL Group Ltd, Porte Marsh Road, Calne
 Wiltshire, SN11 9BW, United Kingdom
 Tel +44 (0)1249 822 222 Fax: +44 (0)1249 822 300
 www.bilgroup.co.uk

TITLE	BZSAB200CUBJ	
-------	---------------------	--

UNLESS OTHERWISE SPECIFIED DIMENSIONS ARE IN MILLIMETRES		SIZE	DWG NO.	REV
Unspecified Tolerances Machining ± 0.25mm Fabrication ± 1mm		A4	BILCW03BZSAB200CUBJ__01	1
FILE NAME		BILCW03BZSAB200CUBJ__01.PDF		SHEET 1 OF 1