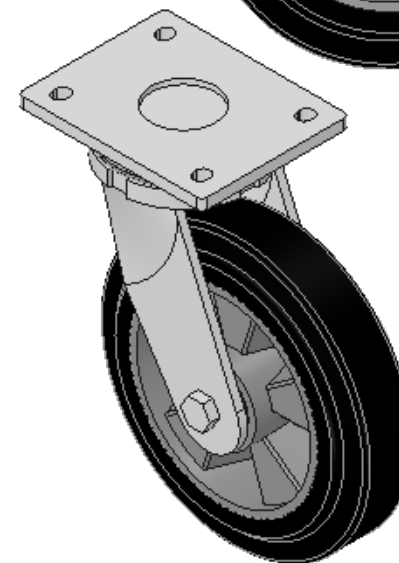
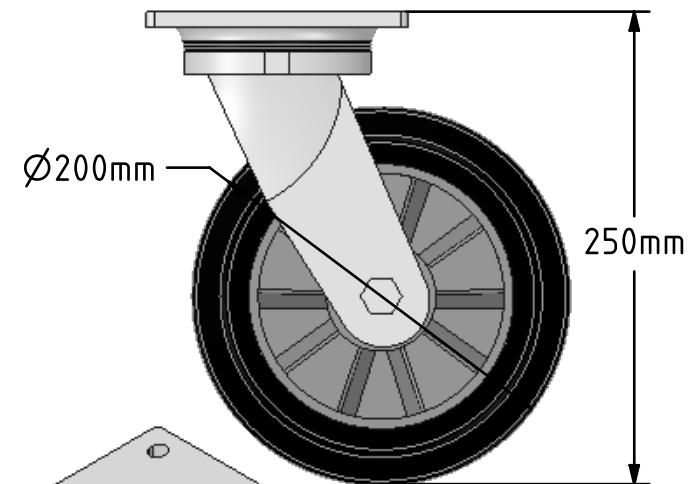
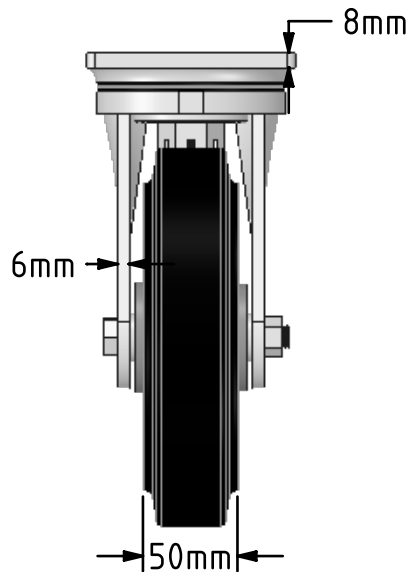
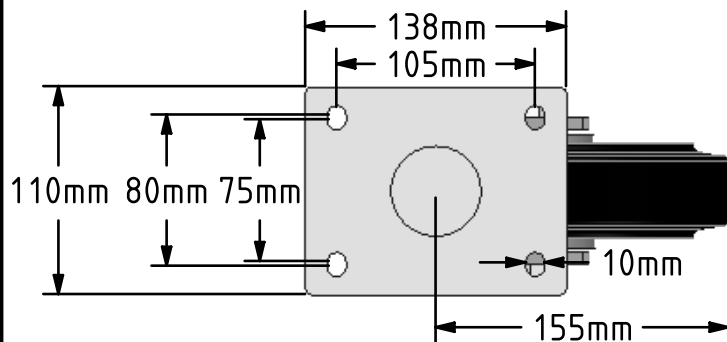


**DRAWING DISCLAIMER**

COPYRIGHT OF THIS DRAWING IS RESERVED BY BIL GROUP LTD. IT IS ISSUED ON CONDITION THAT IT IS NOT REPRODUCED, COPIED, OR DISCLOSED TO A THIRD PARTY EITHER WHOLLY OR IN PART WITHOUT THE CONSENT IN WRITING OF BIL GROUP LTD.



**Description:**  
BZSAB200ERBJ

Fabricated zinc plated swivel castor with plate fixing fitted with a black high elastic natural 65 shore A rubber aluminium centred wheel with ball bearings. Wheel diameter 200mm, tread width 50mm, overall height 250mm, plate size 138mm x 110mm, hole centres 105mm x 80mm/75mm. Load capacity 500kg at 4kph  
 - At 6 kph speed, the load of each wheel is advised to be 80% of the load at 4kph  
 - At 10 kph speed, the load of each wheel is advised to be 55% of the load at 4 kph. REACH compliant also PAH-Free rubber to confirm to EU-directive 2005/69/EC



	NAME	DATE
DRAWN	Matt	25/05/18
APPROVED BY	Chris	25/05/18
SCALE	1:4	25/05/18
WEIGHT	4.719kg	25/05/18

 BIL Group Ltd, Porte Marsh Road, Calne  
 Wiltshire, SN11 9BW, United Kingdom  
 Tel +44 (0)1249 822 222 Fax: +44 (0)1249 822 300  
 www.bilgroup.co.uk

TITLE	
BZSAB200ERBJ	

UNLESS OTHERWISE SPECIFIED DIMENSIONS ARE IN MILLIMETRES  
 Unspecified Tolerances  
 Machining ± 0.25mm  
 Fabrication ± 1mm

SIZE	DWG NO.	REV
A4	BILCW03BZSAB200ERBJ_01	1
FILE NAME BILCW03BZSAB200ERBJ_01.PDF		SHEET 1 OF 1