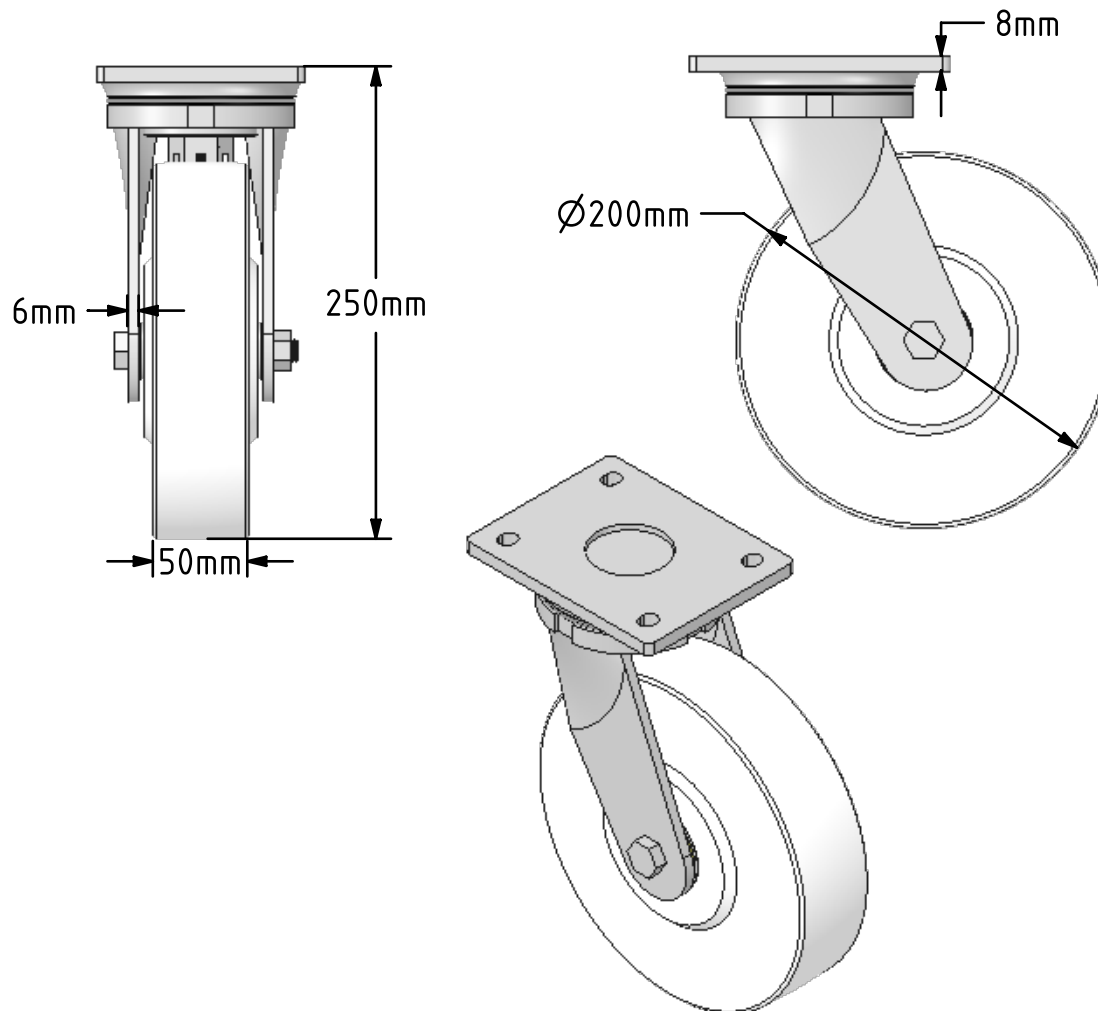
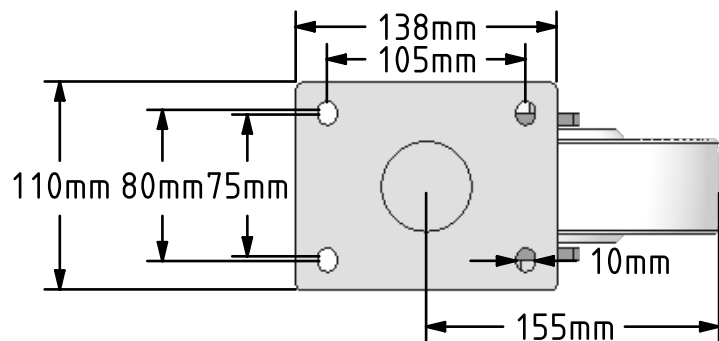


DRAWING DISCLAIMER
 COPYRIGHT OF THIS DRAWING IS RESERVED BY BIL GROUP LTD. IT IS ISSUED ON CONDITION THAT IT IS NOT REPRODUCED, COPIED, OR DISCLOSED TO A THIRD PARTY EITHER WHOLLY OR IN PART WITHOUT THE CONSENT IN WRITING OF BIL GROUP LTD.



Description:
 BZSAB200NYBJ

Fabricated zinc plated swivel castor with plate fixing fitted with a white nylon wheel with ball bearings. Wheel diameter 200mm, tread width 50mm, overall height 250mm, plate size 138mm x 110mm, hole centres 105mm x 80mm/75mm. Load capacity 1500kg.



	NAME	DATE
DRAWN	Matt	24/05/18
APPROVED BY	Tim W	24/05/18
SCALE	1:4	24/05/18
WEIGHT	5.343kg	24/05/18

UNLESS OTHERWISE SPECIFIED DIMENSIONS ARE IN MILLIMETRES

Unspecified Tolerances
 Machining ± 0.25mm
 Fabrication ± 1mm

	BIL Group Ltd, Porte Marsh Road, Calne Wiltshire, SN11 9BW, United Kingdom Tel +44 (0)1249 822 222 Fax: +44 (0)1249 822 300 www.bilgroup.co.uk	
	TITLE BZSAB200NYBJ	
SIZE A4	DWG NO. BILCW03BZSAB200NYBJ_01	REV 1
FILE NAME BILCW03BZSAB200NYBJ_01.PDF		SHEET 1 OF 1