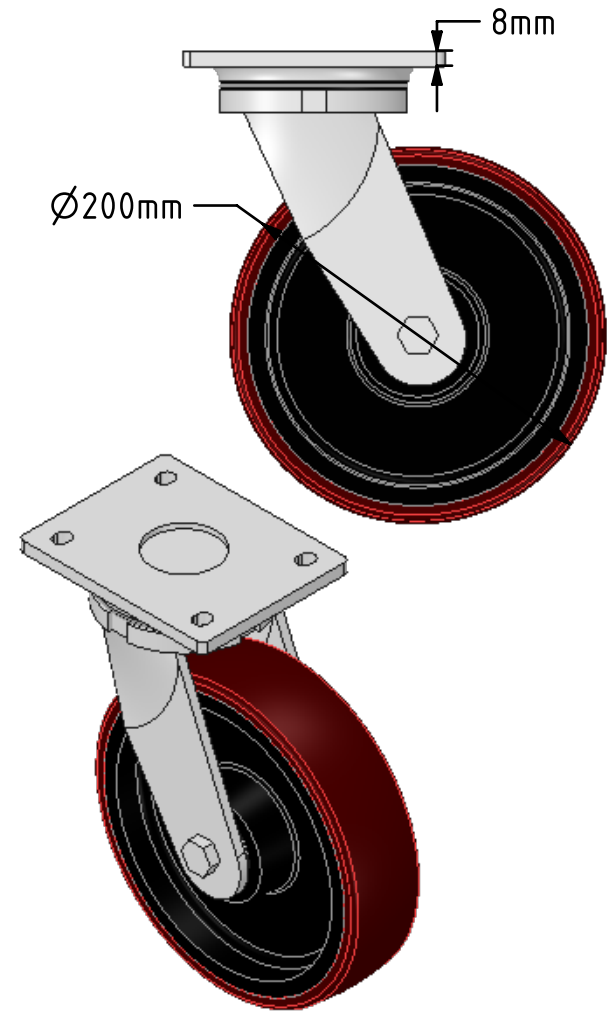
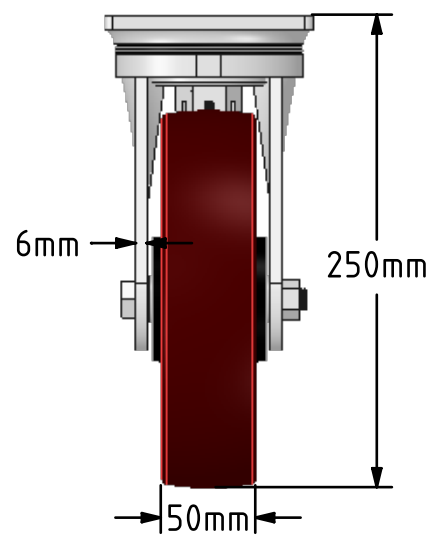
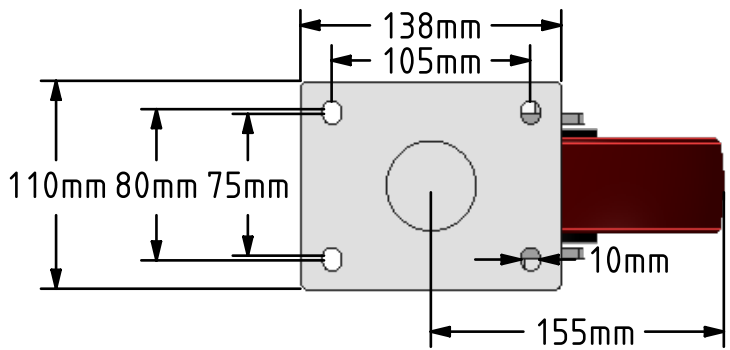



DRAWING DISCLAIMER
 COPYRIGHT OF THIS DRAWING IS RESERVED BY BIL GROUP LTD. IT IS ISSUED ON CONDITION THAT IT IS NOT REPRODUCED, COPIED, OR DISCLOSED TO A THIRD PARTY EITHER WHOLLY OR IN PART WITHOUT THE CONSENT IN WRITING OF BIL GROUP LTD.



Description:
 BZSAB200PTBJ
 Fabricated zinc plated swivel castor with plate fixing fitted with a brown polyurethane tyre cast iron centred wheel centred wheel with ball bearings. Wheel diameter 200mm, tread width 50mm, overall height 250mm, plate size 138mm x 110mm, hole centres 105mm x 80mm/75mm. Load capacity 1000kg,



	NAME	DATE	 BIL Group Ltd, Porte Marsh Road, Calne Wiltshire, SN11 9BW, United Kingdom Tel +44 (0)1249 822 222 Fax: +44 (0)1249 822 300 www.bilgroup.co.uk
DRAWN	Matt	29/05/18	
APPROVED BY	Tim W	29/05/18	
SCALE	1:4	29/05/18	
WEIGHT	6.91kg	29/05/18	
UNLESS OTHERWISE SPECIFIED DIMENSIONS ARE IN MILLIMETRES Unspecified Tolerances Machining ± 0.25mm Fabrication ± 1mm			TITLE BZSAB200PTBJ
SIZE	DWG NO.		REV
A4	BILCW03BZSAB200PTBJ_01		1
FILE NAME	BILCW03BZSAB200PTBJ_01.PDF		SHEET 1 OF 1