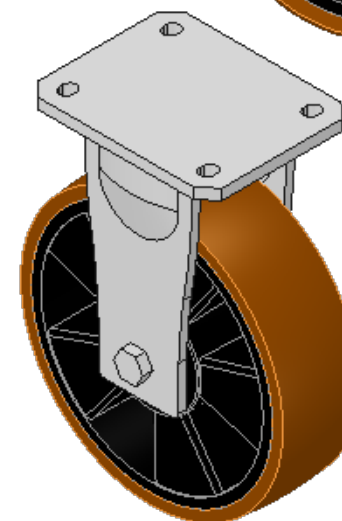
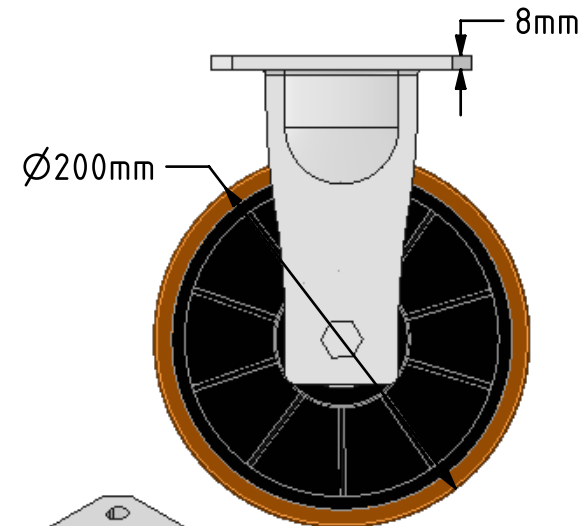
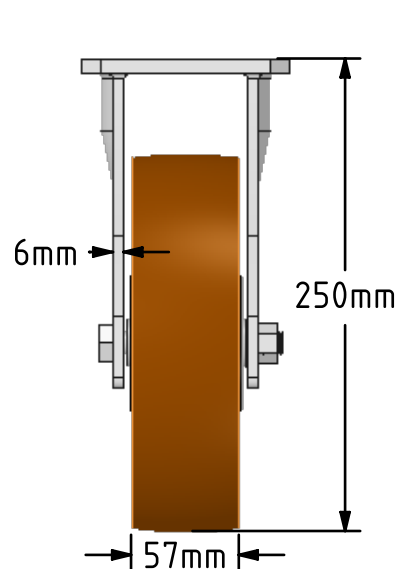
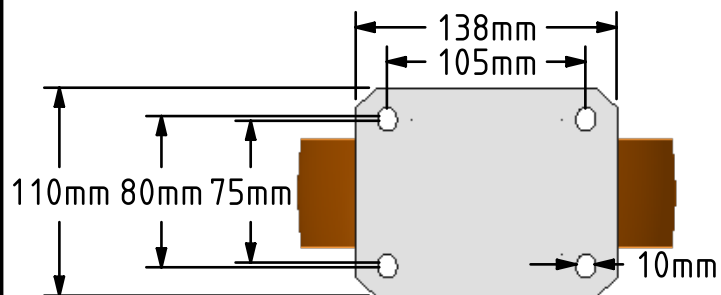
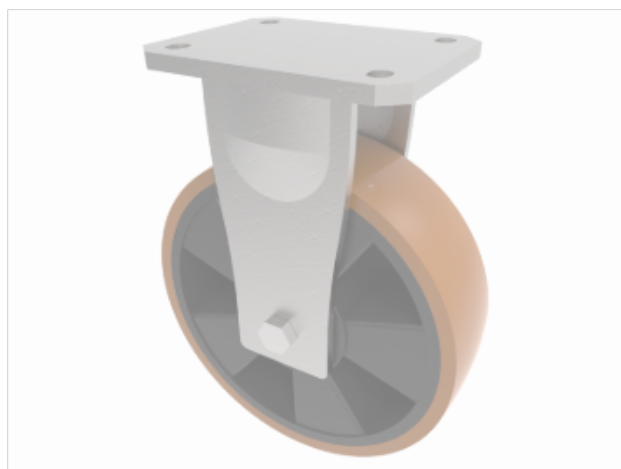


DRAWING DISCLAIMER
 COPYRIGHT OF THIS DRAWING IS RESERVED BY BIL GROUP LTD. IT IS ISSUED ON CONDITION THAT IT IS NOT REPRODUCED, COPIED, OR DISCLOSED TO A THIRD PARTY EITHER WHOLLY OR IN PART WITHOUT THE CONSENT IN WRITING OF BIL GROUP LTD.



Description:
 BZSABF200XPBJ

Fabricated zinc plated fixed castor with plate fixing fitted with a brown polyurethane tyred black nylon centred wheel with ball bearings. Wheel diameter 200mm, tread width 57mm, overall height 250mm, plate size 138mm x 110mm, hole centres 105mm x 80mm/75mm. Load capacity 800kg



	NAME	DATE
DRAWN	Matt	25/05/18
APPROVED BY	Chris	25/05/18
SCALE	1:4	25/05/18
WEIGHT	3.412kg	25/05/18

UNLESS OTHERWISE SPECIFIED DIMENSIONS ARE IN MILLIMETRES

Unspecified Tolerances
 Machining ± 0.25mm
 Fabrication ± 1mm



BIL Group Ltd, Porte Marsh Road, Calne
 Wiltshire, SN11 9BW, United Kingdom
 Tel +44 (0)1249 822 222 Fax: +44 (0)1249 822 300
 www.bilgroup.co.uk

TITLE

BZSABF200XPBJ

SIZE DWG NO.

A4

BILCW03BZSABF200XPBJ_01

REV

1

FILE NAME BILCW03BZSABF200XPBJ_01.PDF

SHEET 1 OF 1