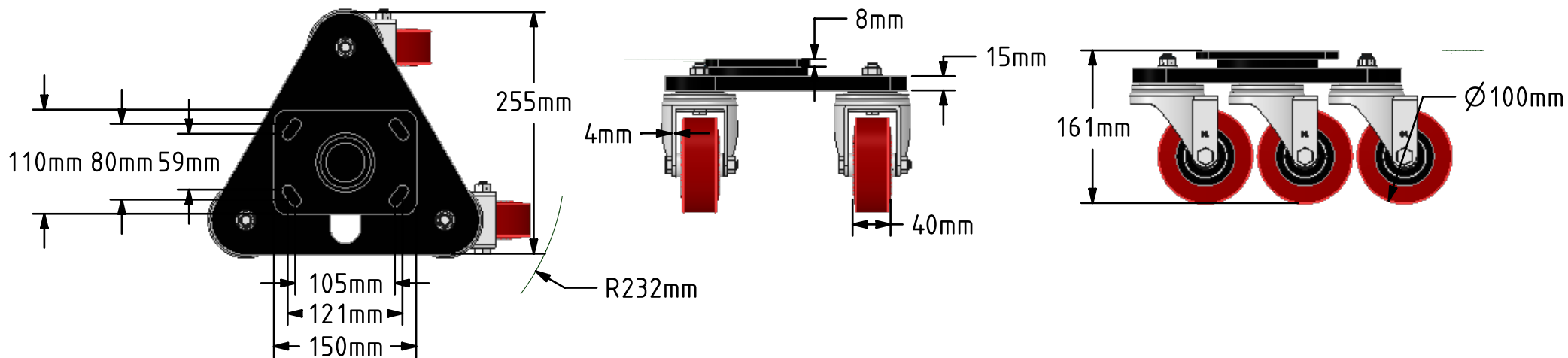
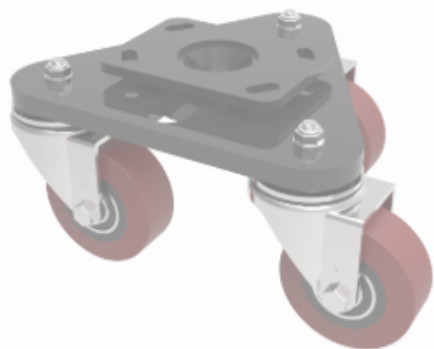
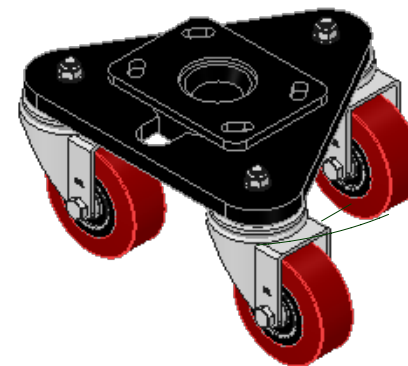



DRAWING DISCLAIMER
 COPYRIGHT OF THIS DRAWING IS RESERVED BY BIL GROUP LTD. IT IS ISSUED ON CONDITION THAT IT IS NOT REPRODUCED, COPIED, OR DISCLOSED TO A THIRD PARTY EITHER WHOLLY OR IN PART WITHOUT THE CONSENT IN WRITING OF BIL GROUP LTD.



Description:
 BZSKH100PTBJ

Central heavy duty swivel head mounted on a triangular base plate fitted with 3 pressed steel swivel castors fitted with polyurethane tyred cast iron centred wheels with ball bearings. Wheel diameter 100mm, tread width 40mm, overall height 161mm. Load capacity 600kg.



	NAME	DATE	BIL Group Ltd, Porte Marsh Road, Calne Wiltshire, SN11 9BW, United Kingdom Tel +44 (0)1249 822 222 Fax: +44 (0)1249 822 300 www.bilgroup.co.uk	
DRAWN	Matt	25/08/17		
APPROVED BY	Tim M	25/08/17		
SCALE	1:6	25/08/17		
WEIGHT	10.858kg	25/08/17		
UNLESS OTHERWISE SPECIFIED DIMENSIONS ARE IN MILLIMETRES			TITLE	
Unspecified Tolerances Machining ± 0.25mm Fabrication ± 1mm			BZSKH100PTBJ	
SIZE A4		DWG NO. BILCW03BZSKH100PTBJ_01	REV 1	
FILE NAME BILCW03BZSKH100PTBJ_01.PDF			SHEET 1 OF 1	