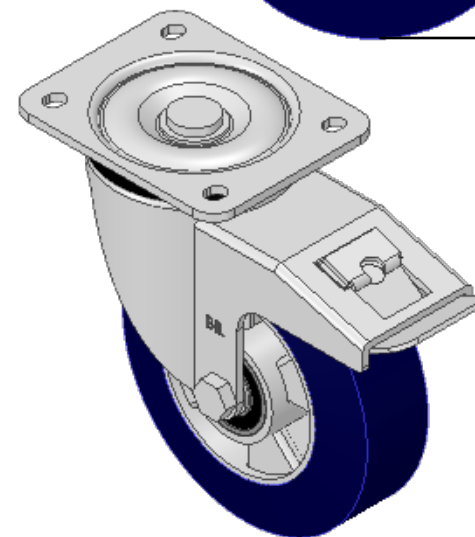
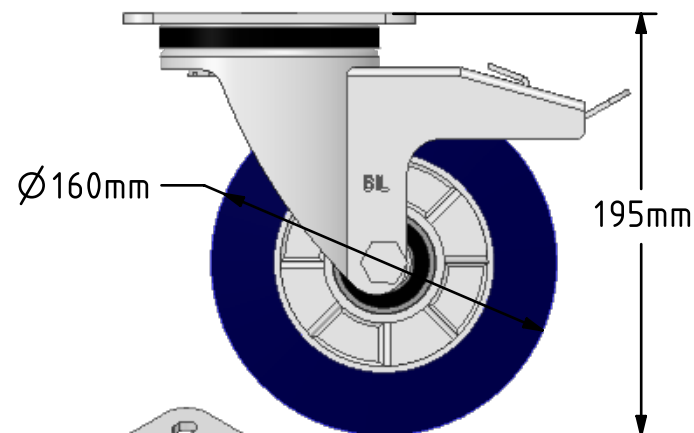
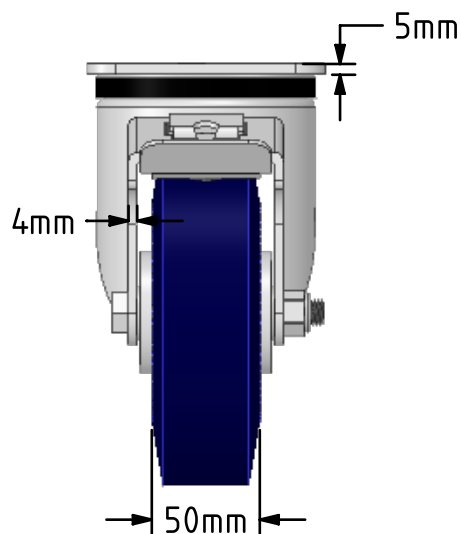
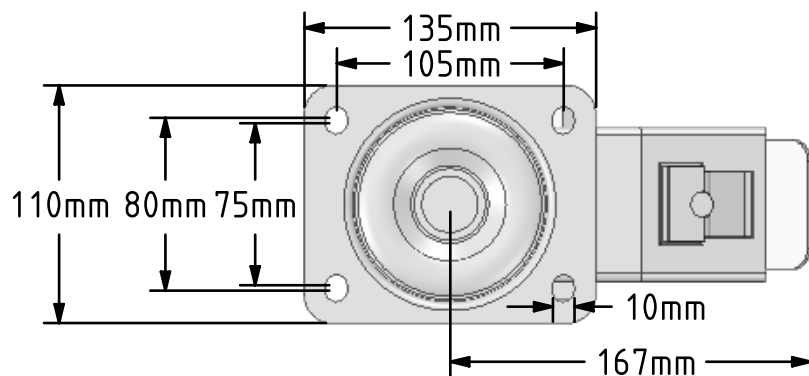


DRAWING DISCLAIMER
 COPYRIGHT OF THIS DRAWING IS RESERVED BY BIL GROUP LTD. IT IS ISSUED ON CONDITION THAT IT IS NOT REPRODUCED, COPIED, OR DISCLOSED TO A THIRD PARTY EITHER WHOLLY OR IN PART WITHOUT THE CONSENT IN WRITING OF BIL GROUP LTD.



Description:
 BZSPH160SPABJSWB

Pressed steel swivel castor with a top plate fixing fitted with a blue 75 shore A polyurethane tyre on aluminium centred wheel with ball bearings and a total lock brake. Wheel diameter 160mm, tread width 50mm, overall height 195mm, top plate 135mm x 110mm, hole centres 105mm x 80mm/75mm. Load capacity 550kg at 4kph and 190kg at 16kph



	NAME	DATE
DRAWN	Matt	03/01/19
APPROVED BY	Tim W	03/01/19
SCALE	2:7	03/01/19
WEIGHT	3.373kg	03/01/19

UNLESS OTHERWISE SPECIFIED DIMENSIONS ARE IN MILLIMETRES

Unspecified Tolerances
 Machining ± 0.25mm
 Fabrication ± 1mm



BIL Group Ltd, Porte Marsh Road, Calne
 Wiltshire, SN11 9BW, United Kingdom
 Tel +44 (0)1249 822 222 Fax: +44 (0)1249 822 300
 www.bilgroup.co.uk

TITLE

BZSPH160SPABJSWB

SIZE	DWG NO.	REV
A4	BILCW03BZSPH160SPABJSWB__01	1

FILE NAME BILCW03BZSPH160SPABJSWB__01.PDF SHEET 1 OF 1