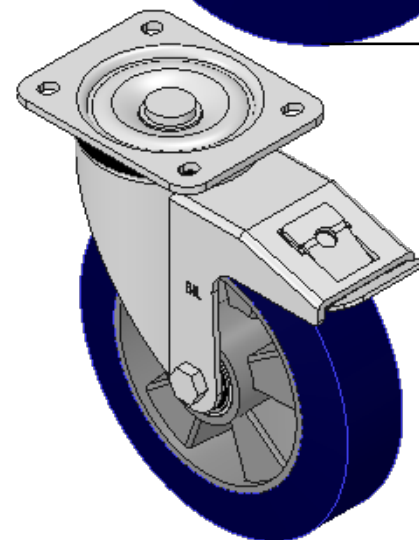
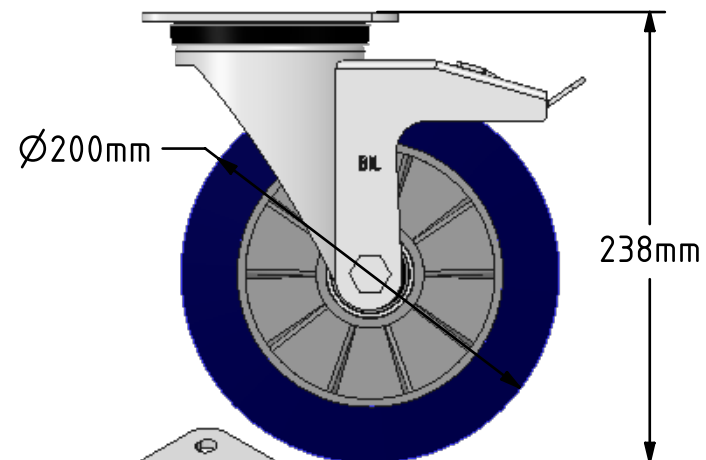
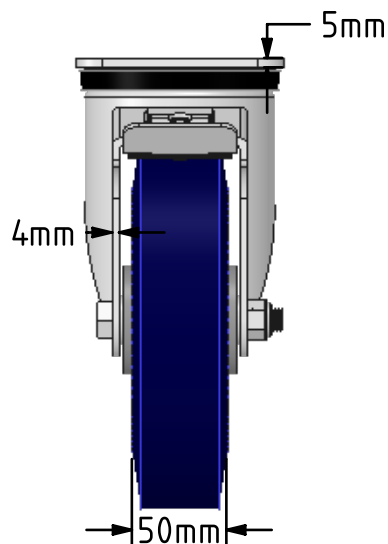
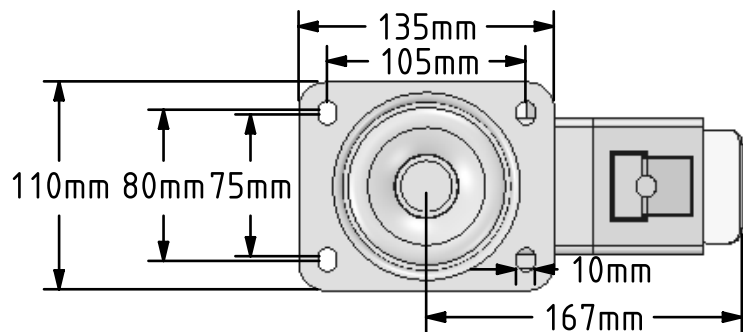


DRAWING DISCLAIMER
 COPYRIGHT OF THIS DRAWING IS RESERVED BY BIL GROUP LTD. IT IS ISSUED ON CONDITION THAT IT IS NOT REPRODUCED, COPIED, OR DISCLOSED TO A THIRD PARTY EITHER WHOLLY OR IN PART WITHOUT THE CONSENT IN WRITING OF BIL GROUP LTD.



Description:
 BZSPH200SPABJSWB

Pressed steel swivel castor with a top plate fixing fitted with a blue 75 shore A polyurethane tyre on aluminium centred wheel with ball bearings and a total lock brake. Wheel diameter 200mm, tread width 50mm, overall height 238mm, top plate 135mm x 110mm, hole centres 105mm x 80mm/75mm. Load capacity 600kg at 4kph and 240kg at 16kph



	NAME	DATE
DRAWN	Matt	16/02/18
APPROVED BY	Chris	16/02/18
SCALE	1:4	16/02/18
WEIGHT	3.844kg	16/02/18

BIL
 BIL Group Ltd, Porte Marsh Road, Calne
 Wiltshire, SN11 9BW, United Kingdom
 Tel +44 (0)1249 822 222 Fax: +44 (0)1249 822 300
 www.bilgroup.co.uk

TITLE		REV
BZSPH200SPABJSWB		2
SIZE	DWG NO.	
A4	BILCW03BZSPH200SPABJSWB__02	

UNLESS OTHERWISE SPECIFIED DIMENSIONS ARE IN MILLIMETRES
 Unspecified Tolerances
 Machining ± 0.25mm
 Fabrication ± 1mm

FILE NAME BILCW03BZSPH200SPABJSWB__02.PDF SHEET 1 OF 1