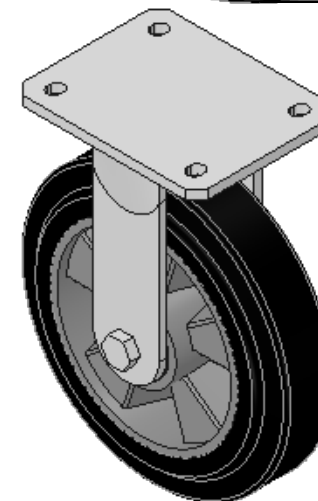
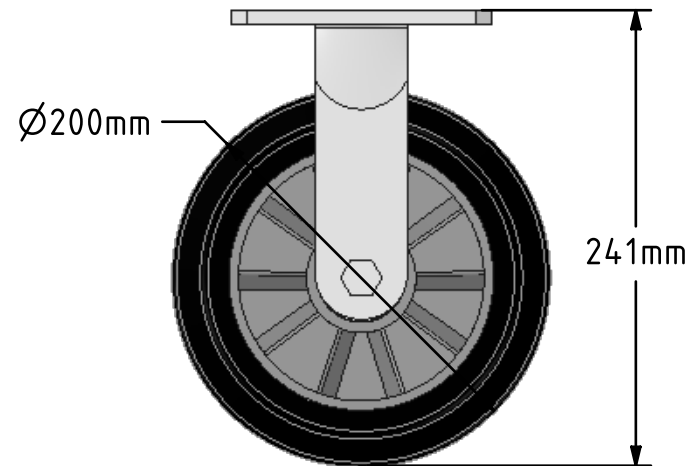
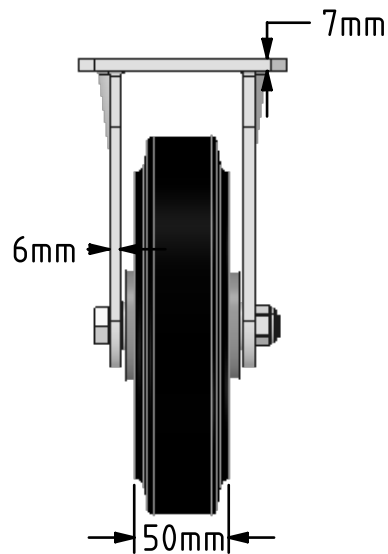
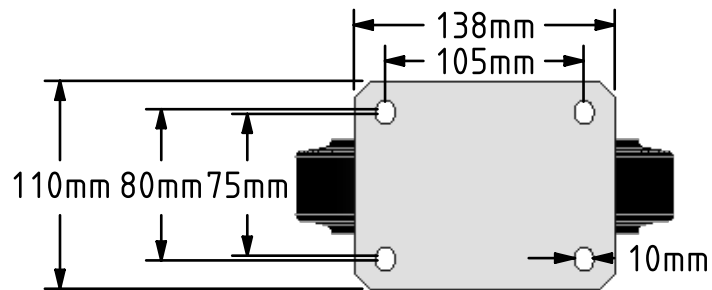


DRAWING DISCLAIMER
 COPYRIGHT OF THIS DRAWING IS RESERVED BY BIL GROUP LTD. IT IS ISSUED ON CONDITION THAT IT IS NOT REPRODUCED, COPIED, OR DISCLOSED TO A THIRD PARTY EITHER WHOLLY OR IN PART WITHOUT THE CONSENT IN WRITING OF BIL GROUP LTD.



Description:
 BZSPHF200ERBJ

Fabricated BZMJF200AS fixed bracket with a top plate fixing fitted with a black high elastic natural 65 shore A rubber tyred wheel aluminium centre with ball bearings. Wheel diameter 200mm, tread width 50mm, overall height 241mm, top plate 135mm x 110mm, hole centres 105mm x 80/75mm. Load capacity 500kg at 4kph and 200kph at 16kph. REACH compliant also PAH-Free rubber to confirm to EU-directive 2005/69/EC



	NAME	DATE
DRAWN	Matt	16/02/18
APPROVED BY	Chris	16/02/18
SCALE	1:4	16/02/18
WEIGHT	3.087kg	16/02/18

 BIL Group Ltd, Porte Marsh Road, Calne Wiltshire, SN11 9BW, United Kingdom
 Tel +44 (0)1249 822 222 Fax: +44 (0)1249 822 300
 www.bilgroup.co.uk

TITLE		
BZSPHF200ERBJ		
SIZE	DWG NO.	REV
A4	BILCW03BZSPHF200ERBJ_01	1
FILE NAME	SHEET 1 OF 1	
BILCW03BZSPHF200ERBJ_01.PDF		

UNLESS OTHERWISE SPECIFIED DIMENSIONS ARE IN MILLIMETRES
 Unspecified Tolerances
 Machining ± 0.25mm
 Fabrication ± 1mm