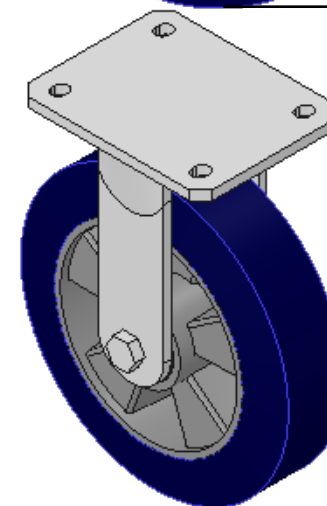
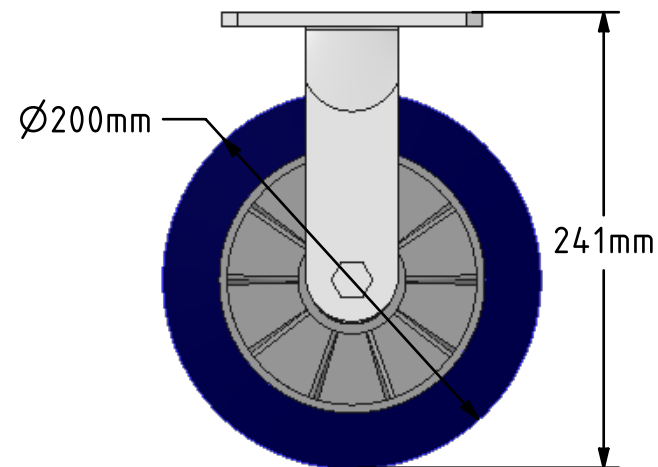
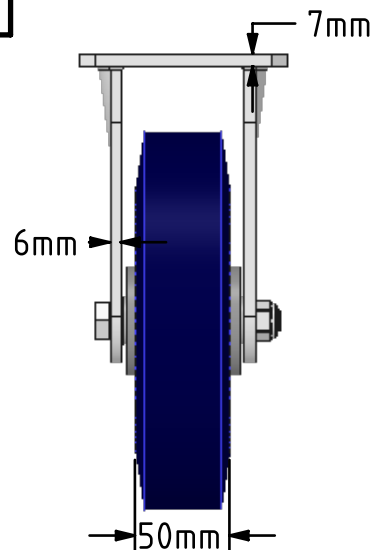
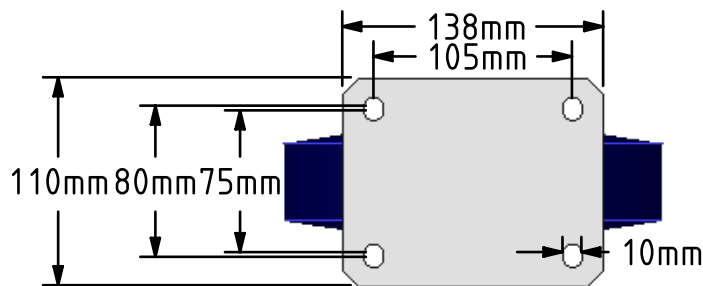


DRAWING DISCLAIMER  
 COPYRIGHT OF THIS DRAWING IS RESERVED BY BIL GROUP LTD. IT IS ISSUED ON CONDITION THAT IT IS NOT REPRODUCED, COPIED, OR DISCLOSED TO A THIRD PARTY EITHER WHOLLY OR IN PART WITHOUT THE CONSENT IN WRITING OF BIL GROUP LTD.



Description:  
 BZSPHF200SPABJ

Fabricated BZMJF200AS fixed castor with a top plate fixing fitted with a blue 75 shore A polyurethane tyre on aluminium centred wheel with ball bearings. Wheel diameter 200mm, tread width 50mm, overall height 241mm, top plate 135mm x 110mm, hole centres 105mm x 80mm/75mm. Load capacity 600kg at 4kph and 240kg at 16kph



	NAME	DATE
DRAWN	Matt	16/02/18
APPROVED BY	Chris	16/02/18
SCALE	1:4	16/02/18
WEIGHT	3.168kg	16/02/18

 BIL Group Ltd, Porte Marsh Road, Calne  
 Wiltshire, SN11 9BW, United Kingdom  
 Tel +44 (0)1249 822 222 Fax: +44 (0)1249 822 300  
 www.bilgroup.co.uk

TITLE  
**BZSPHF200SPABJ**

UNLESS OTHERWISE SPECIFIED DIMENSIONS ARE IN MILLIMETRES  
 Unspecified Tolerances  
 Machining ± 0.25mm  
 Fabrication ± 1mm

SIZE	DWG NO.	REV
A4	BILCW03BZSPHF200SPABJ__02	2
FILE NAME BILCW03BZSPHF200SPABJ__02.PDF		SHEET 1 OF 1