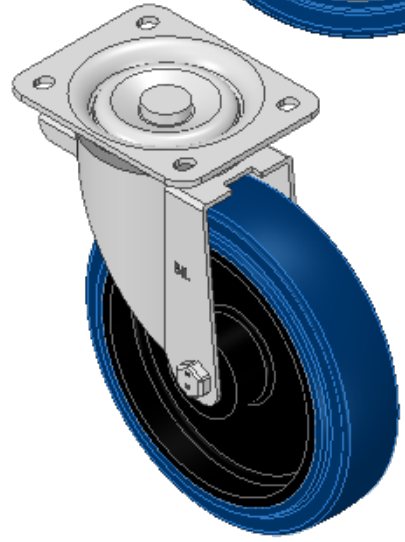
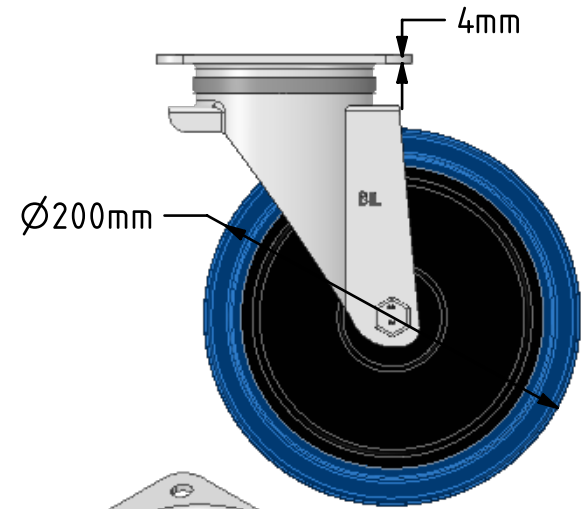
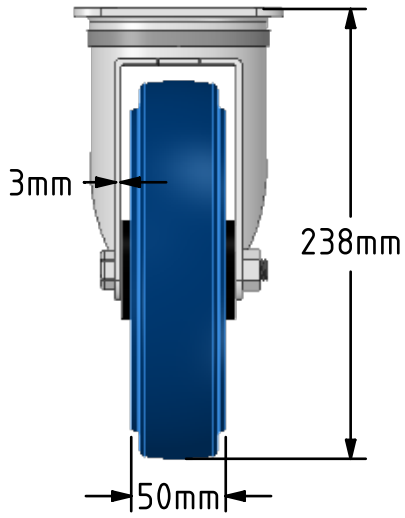
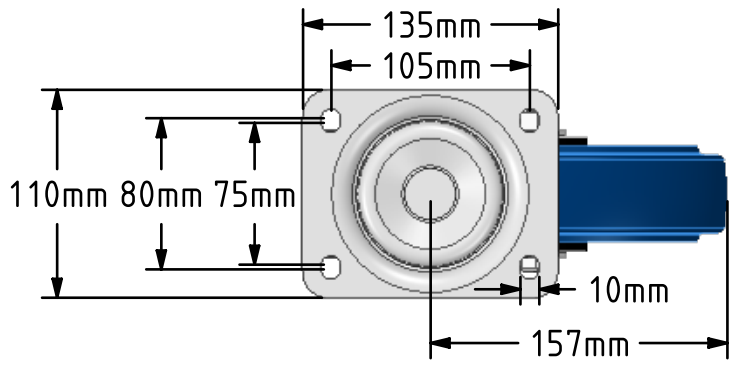
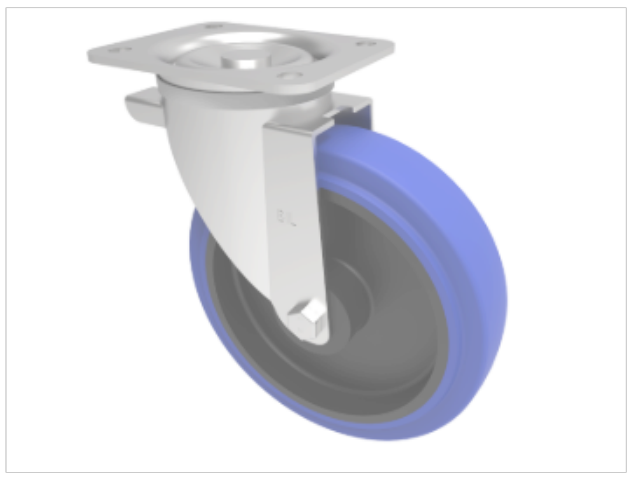


DRAWING DISCLAIMER
 COPYRIGHT OF THIS DRAWING IS RESERVED BY BIL GROUP LTD. IT IS ISSUED ON CONDITION THAT IT IS NOT REPRODUCED, COPIED, OR DISCLOSED TO A THIRD PARTY EITHER WHOLLY OR IN PART WITHOUT THE CONSENT IN WRITING OF BIL GROUP LTD.



Description:
 BZWB200RNB
 Pressed steel swivel castor with a top plate fixing fitted with a blue 75 shore A elastic rubber tyre on a black nylon centred wheel with a roller bearing. Wheel diameter 200mm, tread width 50mm, overall height 238mm, top plate 135mm x 110mm, hole centres 105mm x 80/75mm. Load capacity 350kg.



| | NAME | DATE |
|-------------|---------|----------|
| DRAWN | Matt | 18/04/19 |
| APPROVED BY | Kevin | 18/04/19 |
| SCALE | 1:4 | 18/04/19 |
| WEIGHT | 2.546kg | 18/04/19 |

BIL Group Ltd, Porte Marsh Road, Calne
 Wiltshire, SN11 9BW, United Kingdom
 Tel +44 (0)1249 822 222 Fax: +44 (0)1249 822 300
 www.bilgroup.co.uk

| | | | |
|-----------|--------------------------|------------|--------------|
| TITLE | | BZWB200RNB | |
| SIZE | DWG NO. | REV | |
| A4 | BILCW03BZWB200RNB_01 | 1 | |
| FILE NAME | BILCW03BZWB200RNB_01.PDF | | SHEET 1 OF 1 |

UNLESS OTHERWISE SPECIFIED DIMENSIONS ARE IN MILLIMETRES
 Unspecified Tolerances
 Machining ± 0.25mm
 Fabrication ± 1mm