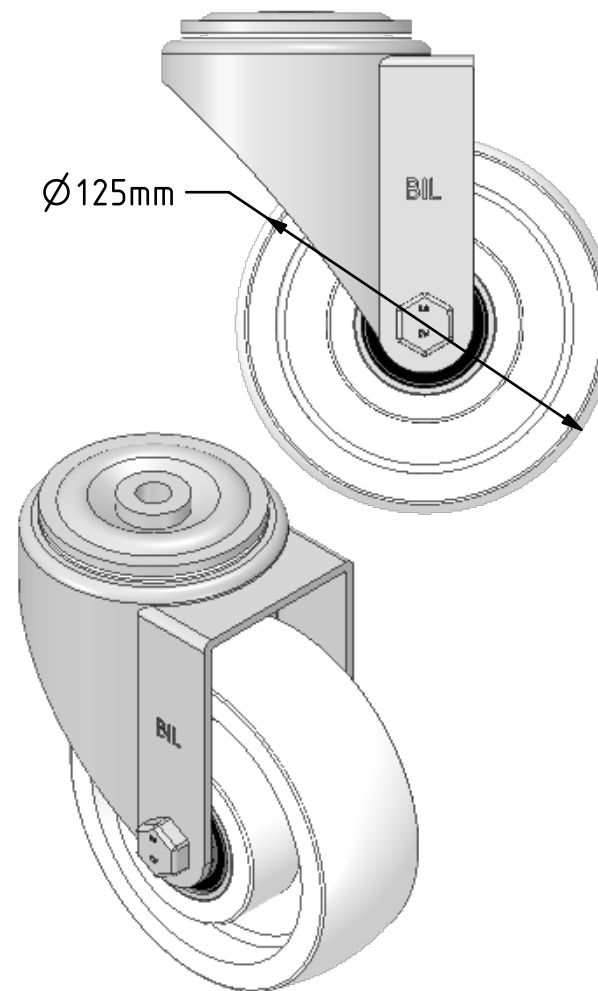
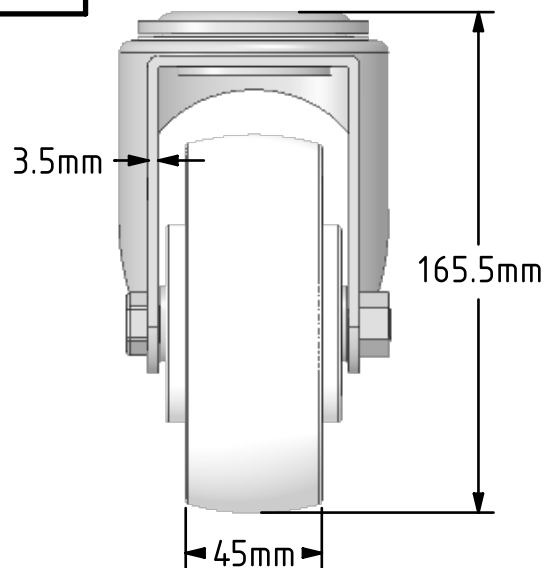
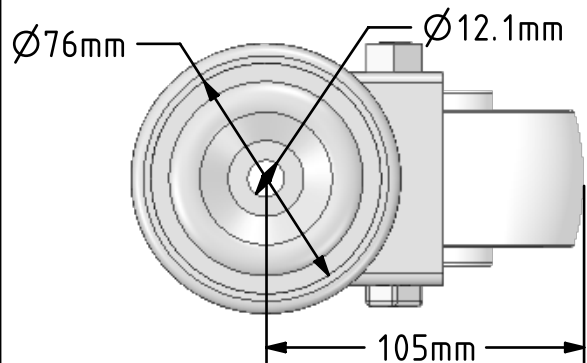
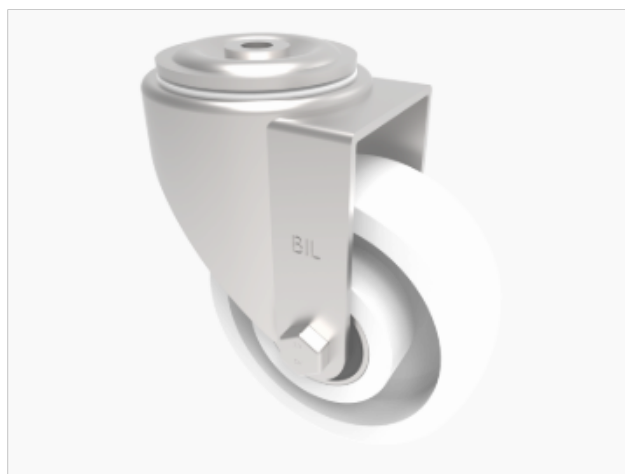


DRAWING DISCLAIMER
 COPYRIGHT OF THIS DRAWING IS RESERVED BY BIL GROUP LTD. IT IS ISSUED ON CONDITION THAT IT IS NOT REPRODUCED, COPIED, OR DISCLOSED TO A THIRD PARTY EITHER WHOLLY OR IN PART WITHOUT THE CONSENT IN WRITING OF BIL GROUP LTD.



Description:
 BZWH125NYBJBH12

Pressed steel swivel castor with a 12mm bolt hole fitted with a white nylon wheel with ball bearings. Wheel diameter 125mm, tread width 45mm, overall height 165mm, Load capacity 400kg.



	NAME	DATE
DRAWN	Matt	02/01/19
APPROVED BY	Tim W	02/01/19
SCALE	2.5	02/01/19
WEIGHT	1.548kg	02/01/19

 BIL Group Ltd, Porte Marsh Road, Calne
 Wiltshire, SN11 9BW, United Kingdom
 Tel +44 (0)1249 822 222 Fax: +44 (0)1249 822 300
 www.bilgroup.co.uk

TITLE
 BZWH125NYBJBH12

UNLESS OTHERWISE SPECIFIED DIMENSIONS ARE IN MILLIMETRES
 Unspecified Tolerances
 Machining ± 0.25mm
 Fabrication ± 1mm

SIZE	DWG NO.	REV
A4	BILCW03BZWH125NYBJBH12__01	1

FILE NAME BILCW03BZWH125NYBJBH12__01.PDF SHEET 1 OF 1