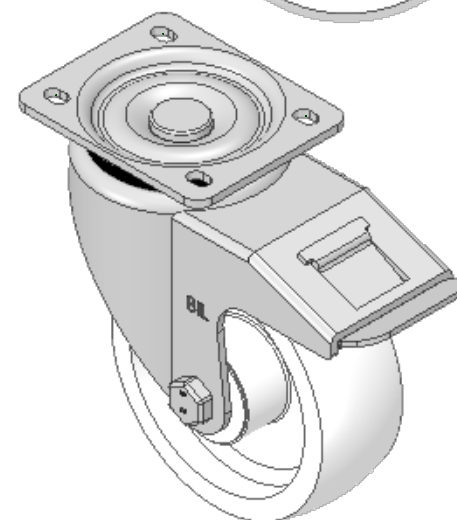
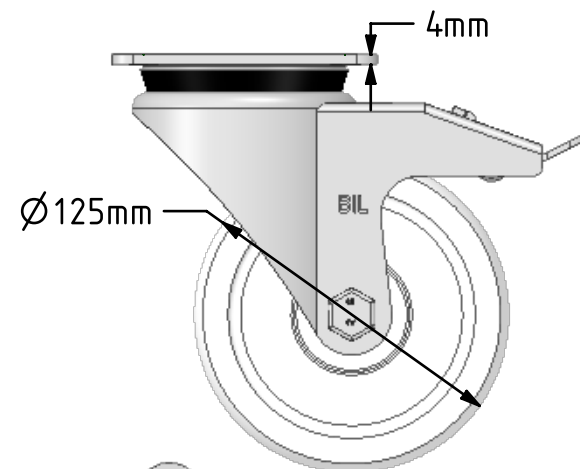
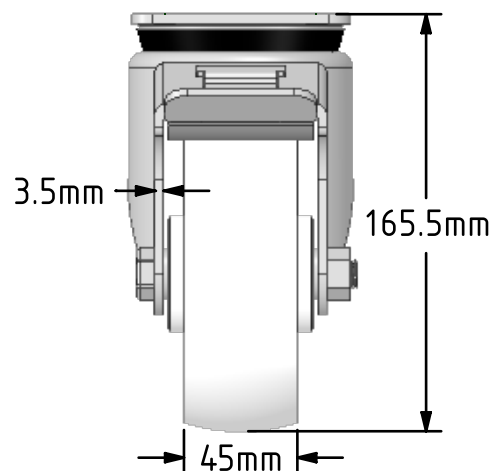
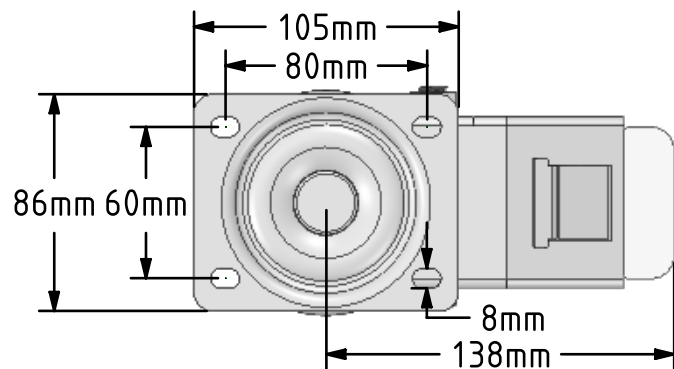


DRAWING DISCLAIMER  
 COPYRIGHT OF THIS DRAWING IS RESERVED BY BIL GROUP LTD. IT IS ISSUED ON CONDITION THAT IT IS NOT REPRODUCED, COPIED, OR DISCLOSED TO A THIRD PARTY EITHER WHOLLY OR IN PART WITHOUT THE CONSENT IN WRITING OF BIL GROUP LTD.



Description:  
 BZWH125NYSWB

Pressed steel swivel castor with a top plate fixing fitted with a white nylon wheel with plain bearing and total lock brake. Wheel diameter 125mm, tread width 45mm, overall height 165mm, top plate 105mm x 86mm, hole centres 80mm x 60mm. Load capacity 500kg.



	NAME	DATE
DRAWN	Matt	17/12/18
APPROVED BY	Chris	17/12/18
SCALE	1:3	17/12/18
WEIGHT	1.728kg	17/12/18

 BIL Group Ltd, Porte Marsh Road, Calne  
 Wiltshire, SN11 9BW, United Kingdom  
 Tel +44 (0)1249 822 222 Fax: +44 (0)1249 822 300  
 www.bilgroup.co.uk

TITLE	
BZWH125NYSWB	

UNLESS OTHERWISE SPECIFIED DIMENSIONS ARE IN MILLIMETRES  
 Unspecified Tolerances  
 Machining ± 0.25mm  
 Fabrication ± 1mm

SIZE	DWG NO.	REV
A4	BILCW03BZWH125NYSWB_01	1
FILE NAME	BILCW03BZWH125NYSWB_01.PDF SHEET 1 OF 1	