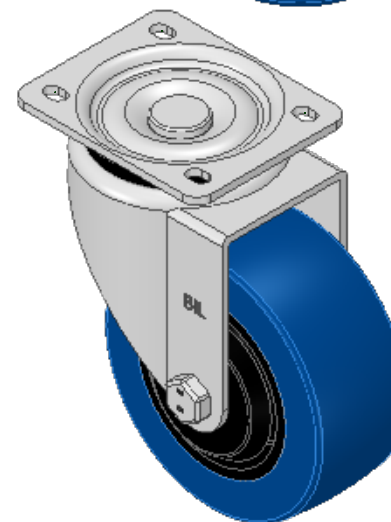
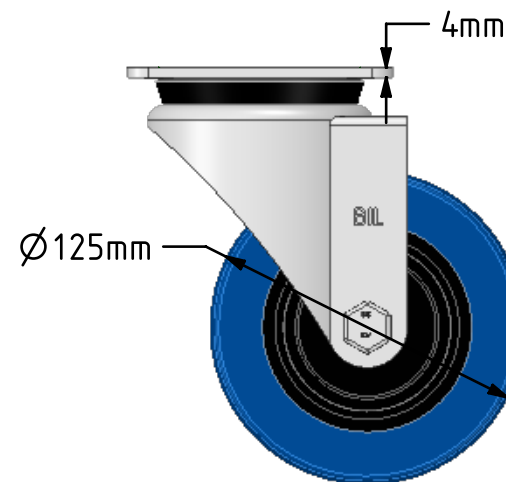
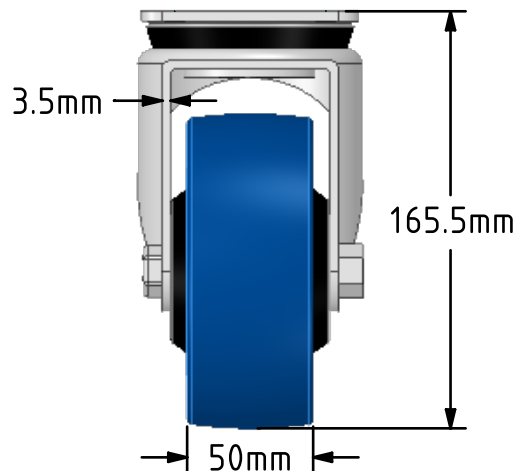
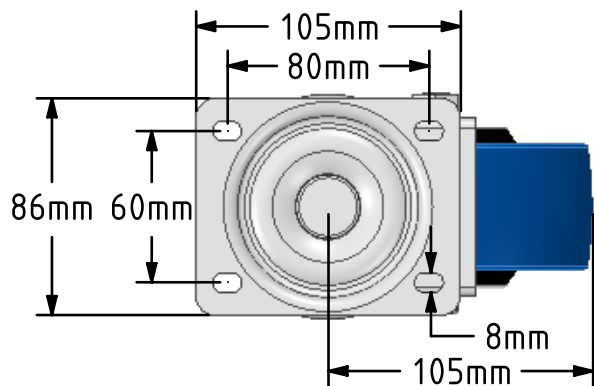


DRAWING DISCLAIMER
 COPYRIGHT OF THIS DRAWING IS RESERVED BY BIL GROUP LTD. IT IS ISSUED ON CONDITION THAT IT IS NOT REPRODUCED, COPIED, OR DISCLOSED TO A THIRD PARTY EITHER WHOLLY OR IN PART WITHOUT THE CONSENT IN WRITING OF BIL GROUP LTD.



Description:
 BZWH125RNBJ

Pressed steel swivel castor with a top plate fixing with a 65 shore A blue elastic rubber tyre wheel with a black nylon centre with ball bearing. Wheel diameter 125mm, tread width 50mm, overall height 165mm, top plate 105mm x 86mm, hole centres 80mm x 60mm. Load capacity 275kg. REACH compliant also PAH-Free rubber to confirm to EU-directive 2005/69/EC



	NAME	DATE
DRAWN	Matt	24/05/19
APPROVED BY	Chris	24/05/19
SCALE	1:3	24/05/19
WEIGHT	1.773kg	24/05/19

UNLESS OTHERWISE SPECIFIED DIMENSIONS ARE IN MILLIMETRES

Unspecified Tolerances
 Machining ± 0.25mm
 Fabrication ± 1mm



BIL Group Ltd, Porte Marsh Road, Calne
 Wiltshire, SN11 9BW, United Kingdom
 Tel +44 (0)1249 822 222 Fax: +44 (0)1249 822 300
 www.bilgroup.co.uk

TITLE

BZWH125RNBJ

SIZE DWG NO.
 A4

BILCW03BZWH125RNBJ_01

REV
 1

FILE NAME BILCW03BZWH125RNBJ_01.PDF SHEET 1 OF 1