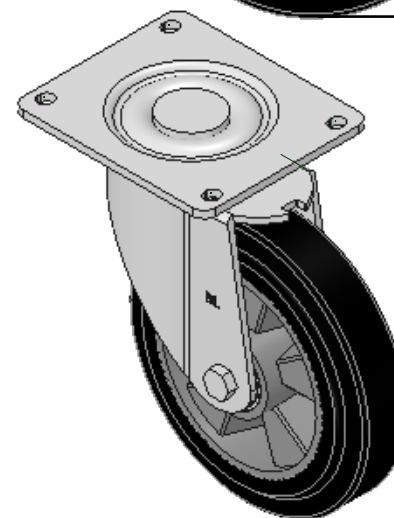
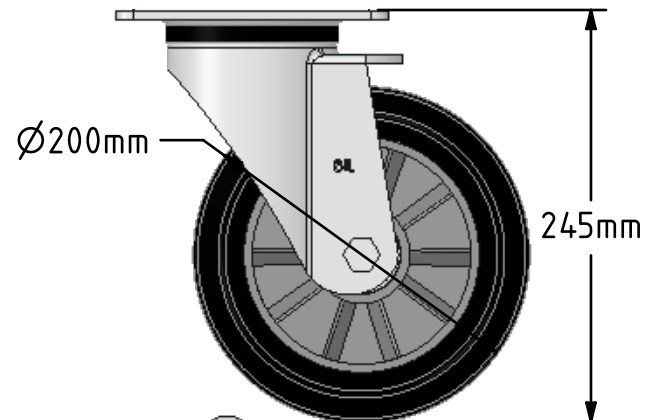
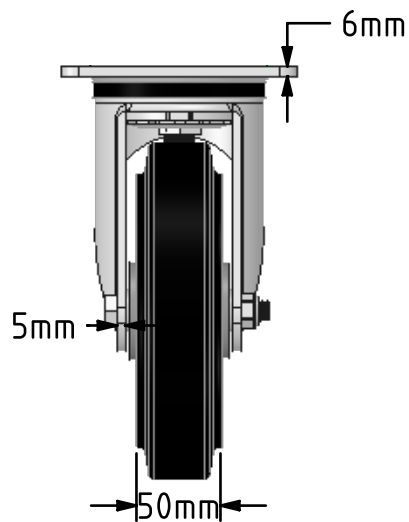
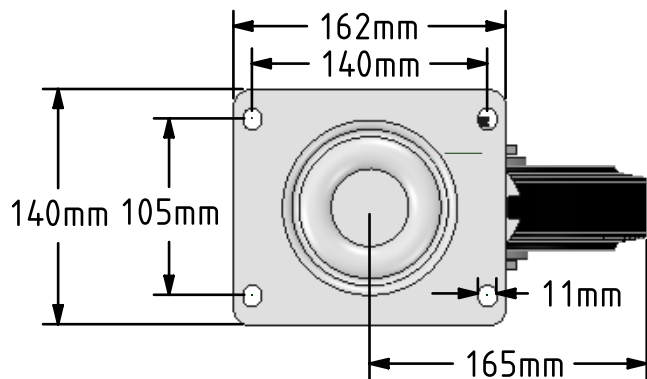



DRAWING DISCLAIMER  
 COPYRIGHT OF THIS DRAWING IS RESERVED BY BIL GROUP LTD. IT IS ISSUED ON CONDITION THAT IT IS NOT REPRODUCED, COPIED, OR DISCLOSED TO A THIRD PARTY EITHER WHOLLY OR IN PART WITHOUT THE CONSENT IN WRITING OF BIL GROUP LTD.



Description:  
 BZXP200ERBJLP

Pressed steel swivel castor with a top plate fixing fitted with a black high elastic 65 shore A rubber tyred wheel aluminium centre with ball bearings. Wheel diameter 200mm, tread width 50mm, overall height 245mm, top plate 175mm x 140mm, hole centres 140mm x 105mm. Load capacity 500kg at 4kph and 200kg at 16kph. REACH compliant also PAH-Free rubber to confirm to EU-directive 2005/69/EC



	NAME	DATE	BIL Group Ltd, Porte Marsh Road, Calne Wiltshire, SN11 9BW, United Kingdom Tel +44 (0)1249 822 222 Fax: +44 (0)1249 822 300 www.bilgroup.co.uk	
DRAWN	Matt	15/05/18		
APPROVED BY	Chris	15/05/18		
SCALE	2:9	15/05/18		
WEIGHT	4.56kg	15/05/18		
UNLESS OTHERWISE SPECIFIED DIMENSIONS ARE IN MILLIMETRES			TITLE	
Unspecified Tolerances Machining ± 0.25mm Fabrication ± 1mm			BZXP200ERBJLP	
SIZE A4		DWG NO. BILCW03BZXP200ERBJLP_01	REV 1	
FILE NAME BILCW03BZXP200ERBJLP_01.PDF		SHEET 1 OF 1		