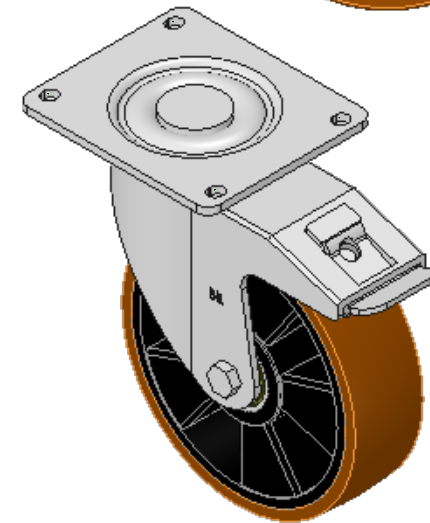
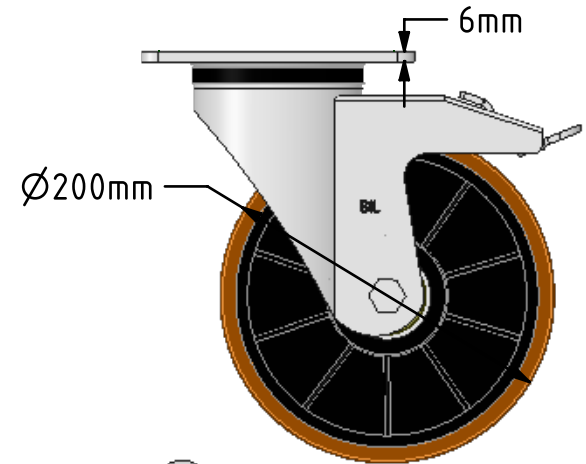
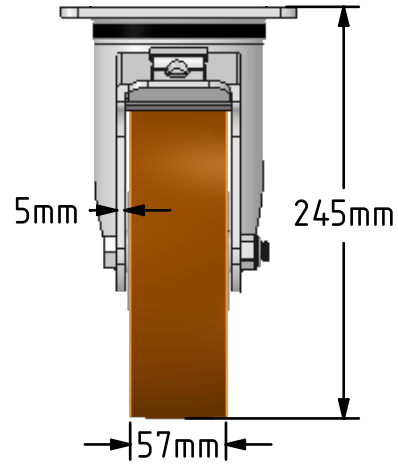
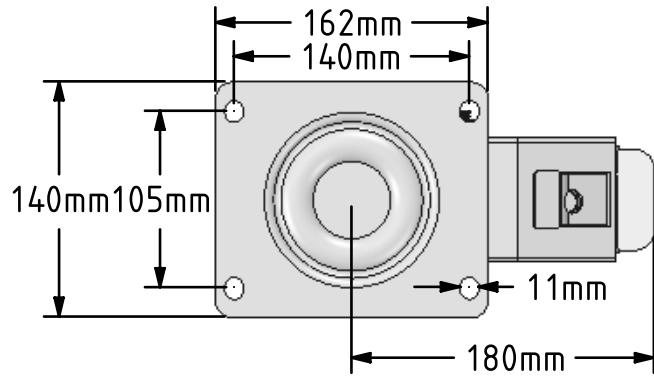


DRAWING DISCLAIMER
 COPYRIGHT OF THIS DRAWING IS RESERVED BY BIL GROUP LTD. IT IS ISSUED ON CONDITION THAT IT IS NOT REPRODUCED, COPIED, OR DISCLOSED TO A THIRD PARTY EITHER WHOLLY OR IN PART WITHOUT THE CONSENT IN WRITING OF BIL GROUP LTD.



Description:
 BZXP200XPNBJSWBLP

Pressed swivel castor with a top plate fixing fitted with a brown polyurethane tyred nylon centred wheel with ball bearings and a totallock brake, Wheel diameter 200mm, tread width 57mm, overall height 245mm, top plate 175mm x 140mm, hole centres 140mm x 105mm. Load capacity 800kg.



	NAME	DATE
DRAWN	Matt	15/05/18
APPROVED BY	Chris	15/05/18
SCALE	2:9	15/05/18
WEIGHT	5.059kg	15/05/18

UNLESS OTHERWISE SPECIFIED DIMENSIONS ARE IN MILLIMETRES
 Unspecified Tolerances
 Machining ± 0.25mm
 Fabrication ± 1mm

 BIL Group Ltd, Porte Marsh Road, Calne Wiltshire, SN11 9BW, United Kingdom
 Tel +44 (0)1249 822 222 Fax: +44 (0)1249 822 300
 www.bilgroup.co.uk

TITLE
BZXP200XPNBJSWBLP

SIZE	DWG NO.	REV
A4	BILCW03BZXP200XPNBJSWBLP__01	1

FILE NAME BILCW03BZXP200XPNBJSWBLP__01.PDF SHEET 1 OF 1