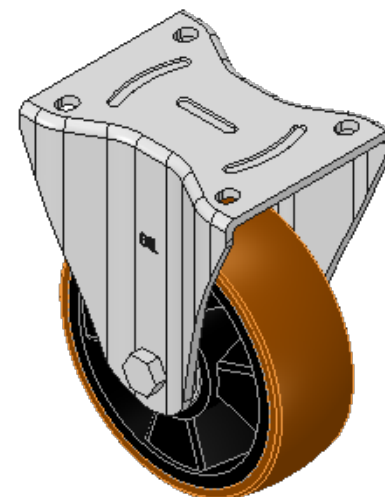
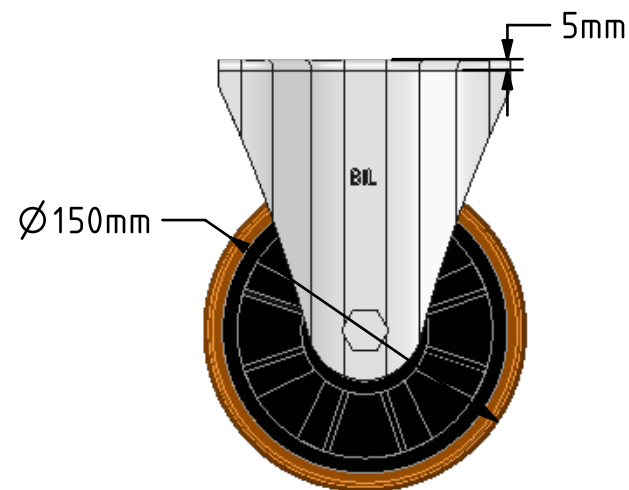
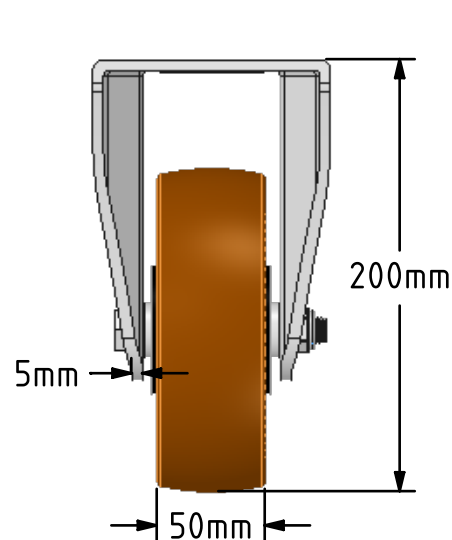
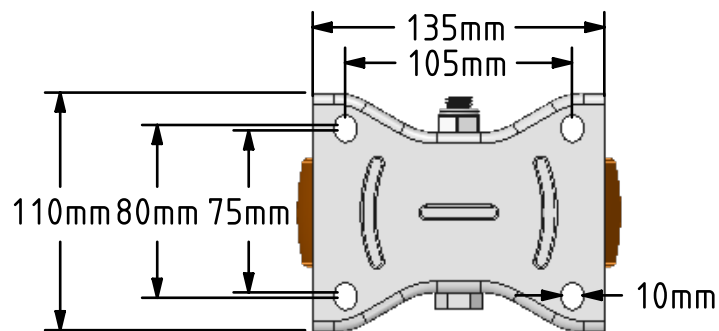


DRAWING DISCLAIMER  
 COPYRIGHT OF THIS DRAWING IS RESERVED BY BIL GROUP LTD. IT IS ISSUED ON CONDITION THAT IT IS NOT REPRODUCED, COPIED, OR DISCLOSED TO A THIRD PARTY EITHER WHOLLY OR IN PART WITHOUT THE CONSENT IN WRITING OF BIL GROUP LTD.



Description:  
 BZXPF150XPBJ

Pressed steel fixed castor with a flat plate fixing fitted with a brown polyurethane tyred on black nylon centred wheel with ball bearings. Wheel diameter 150mm, tread width 50mm, overall height 200mm, plate size 135mm x 110mm, hole centres 105mm x 80/75mm. Load capacity 600kg.



	NAME	DATE
DRAWN	Matt	27/02/18
APPROVED BY	Tim W	27/02/18
SCALE	2:7	27/02/18
WEIGHT	2.39kg	27/02/18

UNLESS OTHERWISE SPECIFIED DIMENSIONS ARE IN MILLIMETRES  
 Unspecified Tolerances  
 Machining ± 0.25mm  
 Fabrication ± 1mm

 BIL Group Ltd, Porte Marsh Road, Calne Wiltshire, SN11 9BW, United Kingdom  
 Tel +44 (0)1249 822 222 Fax: +44 (0)1249 822 300  
 www.bilgroup.co.uk

TITLE		REV
BZXPF150XPBJ		1
SIZE	DWG NO.	FILE NAME
A4	BILCW03BZXPF150XPBJ_01	BILCW03BZXPF150XPBJ_01.PDF
		SHEET 1 OF 1