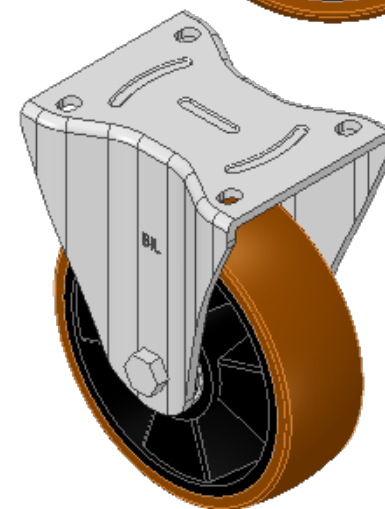
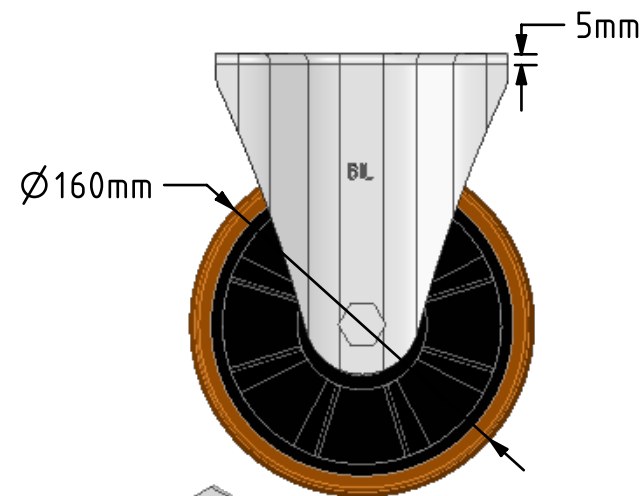
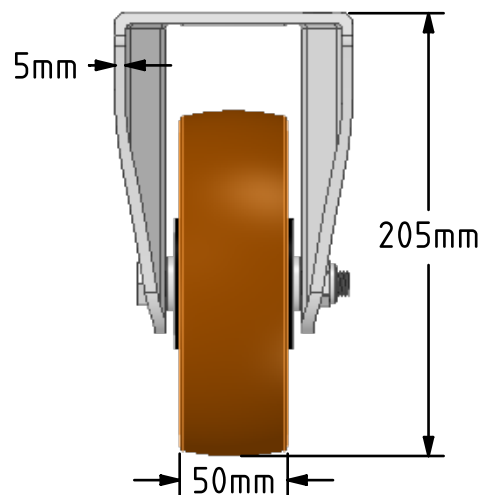
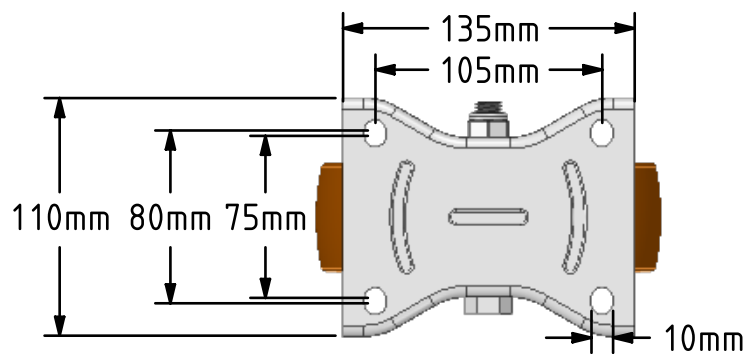


DRAWING DISCLAIMER
 COPYRIGHT OF THIS DRAWING IS RESERVED BY BIL GROUP LTD. IT IS ISSUED ON CONDITION THAT IT IS NOT REPRODUCED, COPIED, OR DISCLOSED TO A THIRD PARTY EITHER WHOLLY OR IN PART WITHOUT THE CONSENT IN WRITING OF BIL GROUP LTD.



Description:
 BZXPF160XPBJ

Pressed fixed castor with a top plate fixing fitted with a brown polyurethane tyre nylon centred wheel with ball bearings, Wheel diameter 160mm, tread width 50mm, overall height 205mm, top plate 135mm x 110mm, hole centres 105mm x 80/75mm. Load capacity 600kg.



	NAME	DATE
DRAWN	Matt	01/03/19
APPROVED BY	Chris	01/03/19
SCALE	2:7	01/03/19
WEIGHT	2.447kg	01/03/19

UNLESS OTHERWISE SPECIFIED DIMENSIONS ARE IN MILLIMETRES

Unspecified Tolerances
 Machining ± 0.25mm
 Fabrication ± 1mm



BIL Group Ltd, Porte Marsh Road, Calne
 Wiltshire, SN11 9BW, United Kingdom
 Tel +44 (0)1249 822 222 Fax: +44 (0)1249 822 300
 www.bilgroup.co.uk

TITLE

BZXPF160XPBJ

SIZE DWG NO.

A4

BILCW03BZXPF160XPBJ__01

REV

1

FILE NAME BILCW03BZXPF160XPBJ__01.PDF

SHEET 1 OF 1