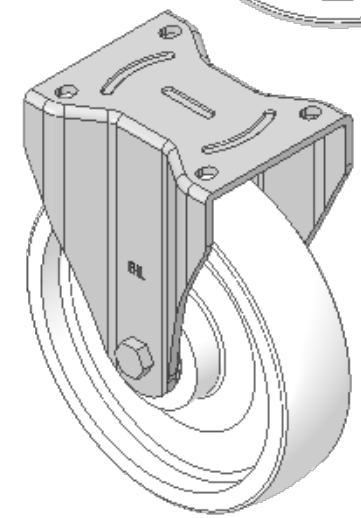
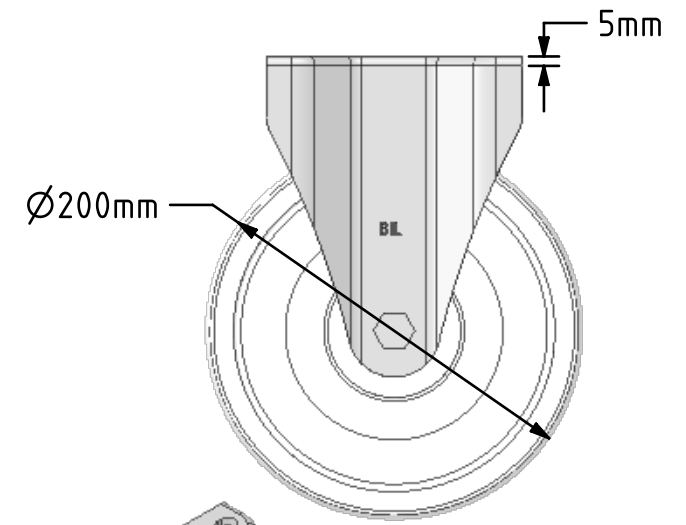
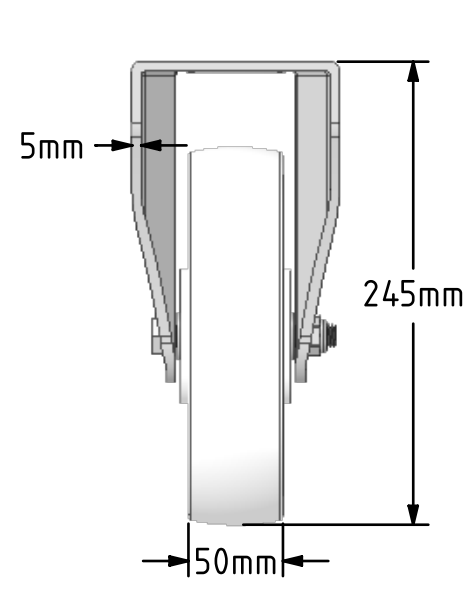
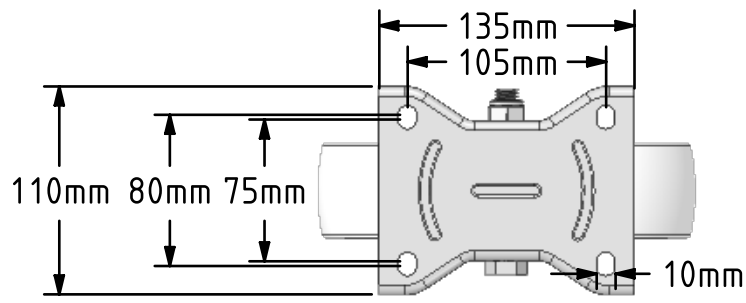


**DRAWING DISCLAIMER**  
 COPYRIGHT OF THIS DRAWING IS RESERVED BY BIL GROUP LTD. IT IS ISSUED ON CONDITION THAT IT IS NOT REPRODUCED, COPIED, OR DISCLOSED TO A THIRD PARTY EITHER WHOLLY OR IN PART WITHOUT THE CONSENT IN WRITING OF BIL GROUP LTD.



**Description:**  
**BZXPF200NYBJ**  
 Pressed steel fixed castor with a top plate fixing fitted with a white nylon wheel with ball bearings. Wheel diameter 200mm, tread width 50mm, overall height 245mm, top plate 135mm x 110mm, hole centres 105mm x 80/75mm. Load capacity 900kg.



|             | NAME    | DATE     |
|-------------|---------|----------|
| DRAWN       | Matt    | 28/02/19 |
| APPROVED BY | Chris   | 28/02/19 |
| SCALE       | 1:4     | 28/02/19 |
| WEIGHT      | 2.932kg | 28/02/19 |

**BIL** Group Ltd, Porte Marsh Road, Calne  
 Wiltshire, SN11 9BW, United Kingdom  
 Tel +44 (0)1249 822 222 Fax: +44 (0)1249 822 300  
 www.bilgroup.co.uk

TITLE  
**BZXPF200NYBJ**

UNLESS OTHERWISE SPECIFIED DIMENSIONS ARE IN MILLIMETRES  
 Unspecified Tolerances  
 Machining ± 0.25mm  
 Fabrication ± 1mm

| SIZE      | DWG NO.                                 | REV |
|-----------|---|-----|
| A4        | BILCW03BZXPF200NYBJ_01                  | 1   |
| FILE NAME | BILCW03BZXPF200NYBJ_01.PDF SHEET 1 OF 1 |     |