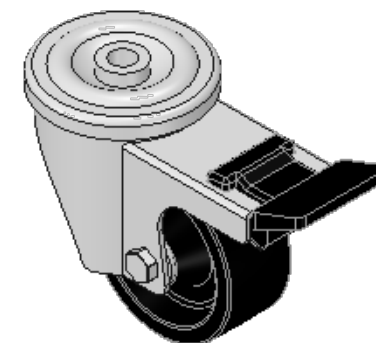
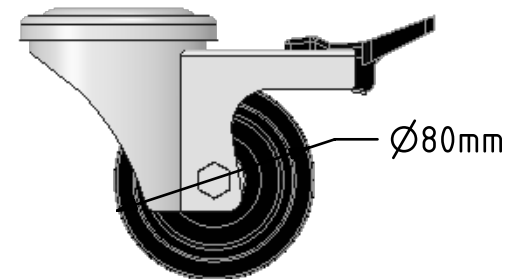
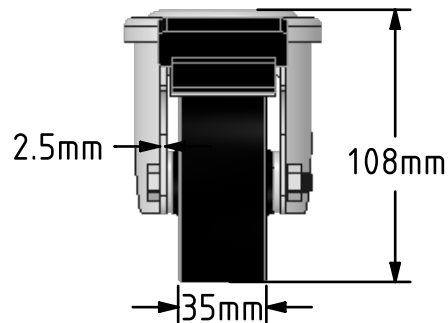
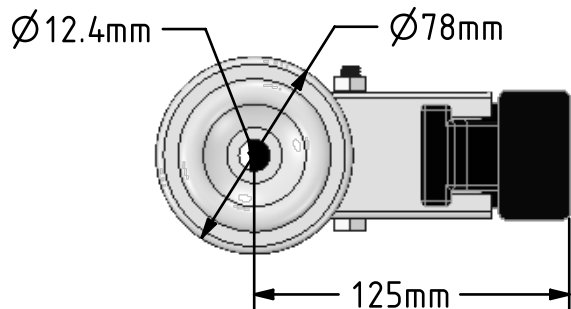
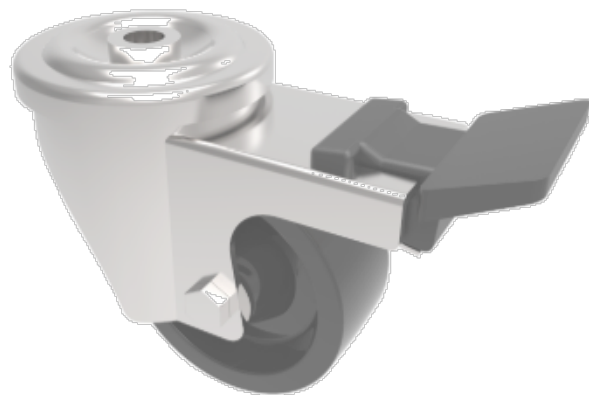



DRAWING DISCLAIMER  
 COPYRIGHT OF THIS DRAWING IS RESERVED BY BIL GROUP LTD. IT IS ISSUED ON CONDITION THAT IT IS NOT REPRODUCED, COPIED, OR DISCLOSED TO A THIRD PARTY EITHER WHOLLY OR IN PART WITHOUT THE CONSENT IN WRITING OF BIL GROUP LTD.



Description:  
 SSMH80AN3BH12SWB

Grade 304 Stainless steel swivel castor with 12mm bolt hole fitted with a black Ditherm wheel with plain bore and total lock brake. Wheel diameter 80mm, tread width 35mm, overall height 113mm, Load capacity 150kg at a maximum temperature of 270c. REACH compliant, RoHs Compliant, USDA approved FDA approved.



	NAME	DATE	 BIL Group Ltd, Porte Marsh Road, Calne Wiltshire, SN11 9BW, United Kingdom Tel +44 (0)1249 822 222 Fax: +44 (0)1249 822 300 www.bilgroup.co.uk
DRAWN	Matt	03/05/17	
APPROVED BY	Tim W	03/05/17	
SCALE	1:3	03/05/17	
WEIGHT	0.835kg	03/05/17	TITLE
UNLESS OTHERWISE SPECIFIED DIMENSIONS ARE IN MILLIMETRES  Unspecified Tolerances Machining ± 0.25mm Fabrication ± 1mm			SSMH80AN3BH12SWB
SIZE		DWG NO.	REV
A4		BILCW03SSMH80AN3BH12SWB__01	1
FILE NAME BILCW03SSMH80AN3BH12SWB__01.PDF			SHEET 1 OF 1