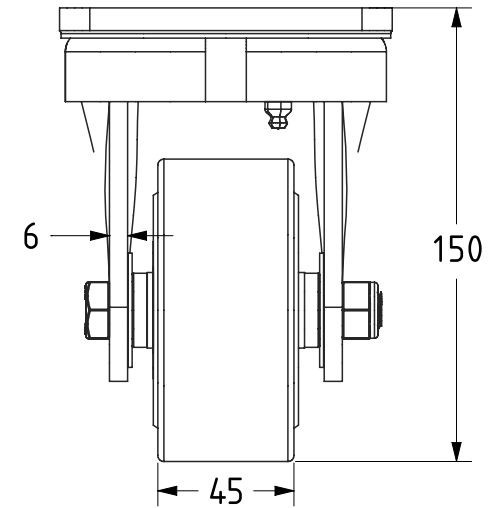


| ITEM NO. | PART NUMBER | QTY |
|----------|-------------------|-----|
| 1 | BZK100AS | 1 |
| 2 | BZH100WNYBJM20HD | 1 |
| 3 | AXLE KIT | |
| | TH20X2X12 | 2 |
| | WM12X25X5 | 2 |
| | WM12X40X1Z | 2 |
| | HEXBOLTM12X90Z8.8 | 1 |
| | NYLOCM12Z | 1 |



UNLESS OTHERWISE SPECIFIED DIMENSIONS ARE IN MILLIMETRES

Unspecified Tolerances
Machining ± 0.25mm
Fabrication ± 1mm

DRAWING DISCLAIMER

COPYRIGHT OF THIS DRAWING IS RESERVED BY BIL GROUP LTD. IT IS ISSUED ON CONDITION THAT IT IS NOT REPRODUCED, COPIED, OR DISCLOSED TO A THIRD PARTY EITHER WHOLLY OR IN PART WITHOUT THE CONSENT IN WRITING OF BIL GROUP LTD.

| | NAME | DATE |
|-------------|---------|----------|
| DRAWN | Matt | 12/09/22 |
| APPROVED BY | Kevin | 12/09/22 |
| SCALE | 2:5 | |
| WEIGHT | 3.446kg | |



BIL Group Ltd, Porte Marsh Road, Calne
Wiltshire, SN11 9BW, United Kingdom
Tel +44 (0)1249 822 222 Fax: +44 (0)1249 822 300
www.bilgroup.co.uk

| | | | |
|------------------|----------------|--------------|---|
| DWG NO. | BZK100NYBJ45HD | REV | 1 |
| BZK100NYBJ/45/HD | | SHEET 1 OF 1 | |