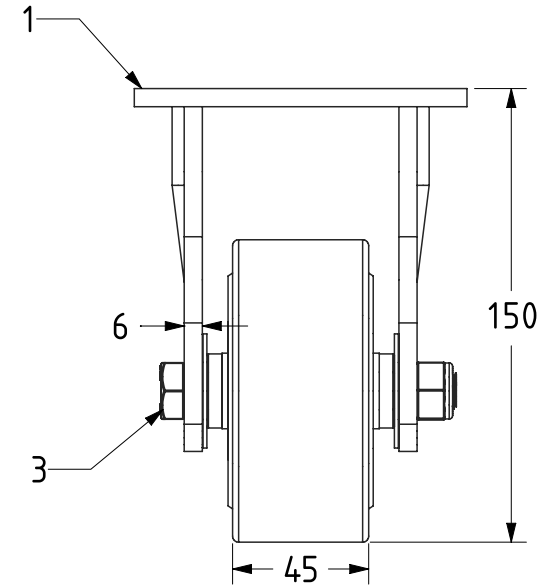


ITEM NO.	PART NUMBER	QTY
1	BZKF100AS	1
2	BZH100WNYBJM20HD	1
3	AXLE KIT	
	TH20X2X12	2
	WM12X25X5	2
	WM12X40X1Z	2
	HEXBOLTM12X90Z8.8	1
	NYLOCM12Z	1



UNLESS OTHERWISE SPECIFIED DIMENSIONS ARE IN MILLIMETRES

Unspecified Tolerances
Machining ± 0.25mm
Fabrication ± 1mm

DRAWING DISCLAIMER

COPYRIGHT OF THIS DRAWING IS RESERVED BY BIL GROUP LTD. IT IS ISSUED ON CONDITION THAT IT IS NOT REPRODUCED, COPIED, OR DISCLOSED TO A THIRD PARTY EITHER WHOLLY OR IN PART WITHOUT THE CONSENT IN WRITING OF BIL GROUP LTD.

	NAME	DATE
DRAWN	Matt	12/09/22
APPROVED BY	Kevin	12/09/22
SCALE	2:5	
WEIGHT	2.294kg	

BIL Group Ltd, Porte Marsh Road, Calne Wiltshire, SN11 9BW, United Kingdom
Tel +44 (0)1249 822 222 Fax: +44 (0)1249 822 300
www.bilgroup.co.uk

DWG NO.	BZKF100NYBJ45HD	REV	1
BZKF100NYBJ/45/HD		SHEET 1 OF 1	