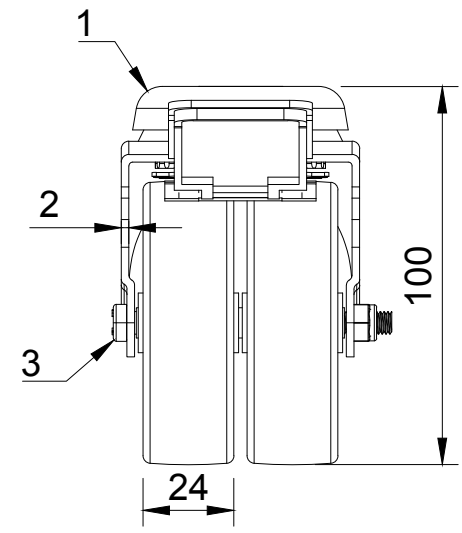




ITEM NO.	PART NUMBER	QTY
1	2BZD75ASBH12	1
	REDUCER	1
2	BZL75WVGR8/26	2
3	AXLE KIT	
	TUBEM8X55	1
	BOLTM6X70Z8.8	1
	NYLOCM6Z	1



UNLESS OTHERWISE SPECIFIED DIMENSIONS ARE IN MILLIMETRES  Unspecified Tolerances Machining ± 0.25mm Fabrication ± 1mm	<b>DRAWING DISCLAIMER</b>  COPYRIGHT OF THIS DRAWING IS RESERVED BY BIL GROUP LTD. IT IS NOT REPRODUCED, COPIED, OR DISCLOSED TO A THIRD PARTY EITHER WHOLLY OR IN PART WITHOUT THE CONSENT IN WRITING OF BIL GROUP LTD	<b>NAME</b> Matt	<b>DATE</b> 31/03/25	 BIL Group Ltd Porte Marsh Road Calne, Wiltshire, SN11 9BW United Kingdom Tel +44 (0)1249 822 222 www.bilgroup.co.uk	 VARLEY H Varley Ltd Unit 5 Century Park Pacific Rd, Broadheath, Altrincham, Cheshire WA14 5BJ Tel +44 (0)161 928 9617 www.varley-castors.co.uk	
		<b>DRAWN BY</b> Matt	<b>DATE</b> 31/03/25			<b>DWG NO.</b> 2BZD75VGRBH10SWB
		<b>APPROVED BY</b> Kevin	<b>DATE</b> 01/04/25	<b>2BZD75VGRBH10SWB</b>		
		<b>SCALE</b> 1:2	<b>WEIGHT</b> 0.566kg	<b>2BZD75VGRBH10SWB</b>		
				SHEET 1 OF 1		