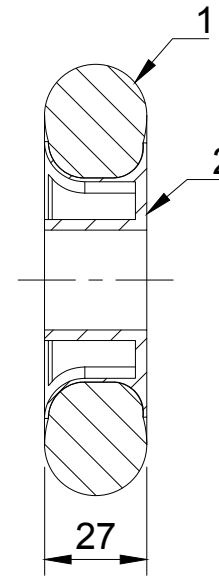
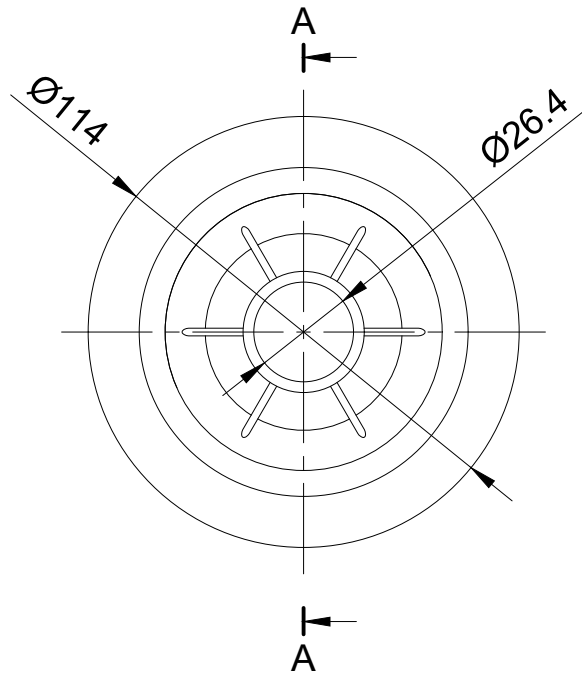




ITEM NO.	PART NUMBER	QTY
1	RUBBER TYRE	1
2	NYLON RIM	1



A-A (1:2)

<p>UNLESS OTHERWISE SPECIFIED DIMENSIONS ARE IN MILLIMETRES</p> <p>Unspecified Tolerances Machining ± 0.25mm Fabrication ± 1mm</p>	<p>DRAWING DISCLAIMER</p> <p>COPYRIGHT OF THIS DRAWING IS RESERVED BY BIL GROUP LTD. IT IS NOT REPRODUCED, COPIED, OR DISCLOSED TO A THIRD PARTY EITHER WHOLLY OR IN PART WITHOUT THE CONSENT IN WRITING OF BIL GROUP LTD</p>	<p>NAME</p> <p>Matt</p>	<p>DATE</p> <p>13/01/25</p>	 <p>BIL Group Ltd Porte Marsh Road Calne, Wiltshire, SN11 9BW United Kingdom Tel +44 (0)1249 822 222 www.bilgroup.co.uk</p>	 <p>H Varley Ltd Unit 5 Century Park Pacific Rd, Broadheath, Altrincham, Cheshire WA14 5BJ Tel +44 (0)161 928 9617 www.varley-castors.co.uk</p>	
		<p>DRAWN BY</p>	<p>APPROVED BY</p>			<p>13/01/25</p>
		<p>SCALE</p>	<p>WEIGHT</p>	<p>1:2</p> <p>0.064kg</p>	<p>DWG NO.</p> <p>BUF1R</p>	<p>REV</p> <p>1</p>
						<p>BUF1R</p>