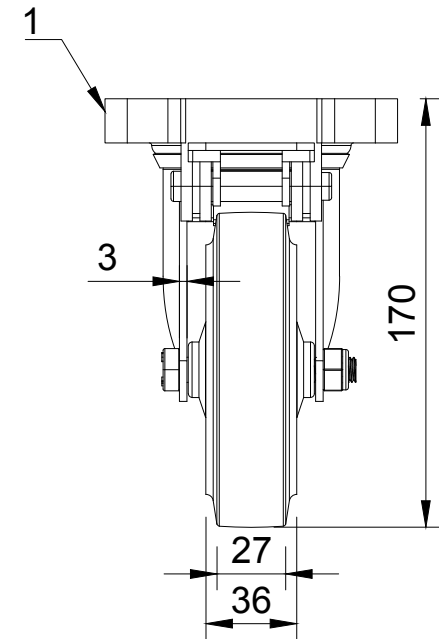




ITEM NO.	PART NUMBER	QTY
1	BZEH125ASFSWBLP	1
2	BZMM125WSRNB/BLK	1
3	AXLE KIT	
	HEXBOLTM10X70Z8.8	1
	NYLOCM10Z	1



UNLESS OTHERWISE SPECIFIED DIMENSIONS ARE IN MILLIMETRES Unspecified Tolerances Machining ± 0.25mm Fabrication ± 1mm	DRAWING DISCLAIMER COPYRIGHT OF THIS DRAWING IS RESERVED BY BIL GROUP LTD. IT IS NOT REPRODUCED, COPIED, OR DISCLOSED TO A THIRD PARTY EITHER WHOLLY OR IN PART WITHOUT THE CONSENT IN WRITING OF BIL GROUP LTD	NAME Matt	DATE 18/03/25	 BIL Group Ltd Porte Marsh Road Calne, Wiltshire, SN11 9BW United Kingdom Tel +44 (0)1249 822 222 www.bilgroup.co.uk	 VARLEY H Varley Ltd Unit 5 Century Park Pacific Rd, Broadheath, Altrincham, Cheshire WA14 5BJ Tel +44 (0)161 928 9617 www.varley-castors.co.uk
		DRAWN BY Matt	DATE 18/03/25		
		APPROVED BY Kevin	DATE 18/03/25		
		SCALE 1:3			
		WEIGHT 1.162kg			
DWG NO. BZEH125SRNB/JFPSWB/BLK				REV 1	
				BZEH125SRNB/JFPSWB/BLK SHEET 1 OF 1	