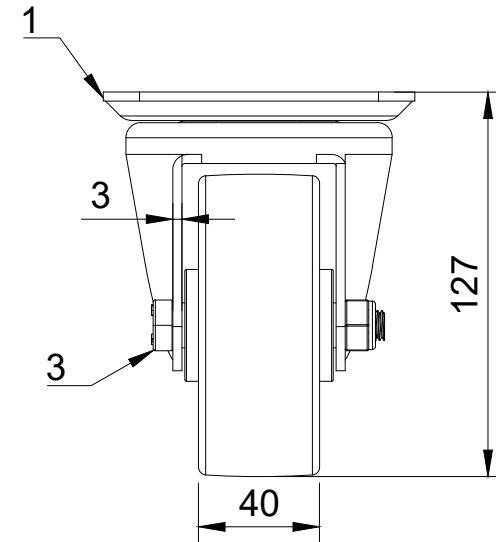


ITEM NO.	PART NUMBER	QTY
1	BZH100ASLP	1
2	BZXH100WPNRB	1
3	AXLE KIT	
	TUBEM15X52/CH	1
	HEXBOLTM10X70Z8.8	1
	NYLOCM10Z	1



UNLESS OTHERWISE SPECIFIED DIMENSIONS ARE IN MILLIMETRES

Unspecified Tolerances
Machining ± 0.25mm
Fabrication ± 1mm

DRAWING DISCLAIMER

COPYRIGHT OF THIS DRAWING IS RESERVED BY BIL GROUP LTD. IT IS NOT REPRODUCED, COPIED, OR DISCLOSED TO A THIRD PARTY EITHER WHOLLY OR IN PART WITHOUT THE CONSENT IN WRITING OF BIL GROUP LTD

	NAME	DATE
DRAWN BY	Matt	10/05/24
APPROVED BY	Kevin	10/05/24
SCALE	2:5	
WEIGHT	1.13kg	


 BIL Group Ltd
 Porte Marsh Road
 Calne, Wiltshire,
 SN11 9BW
 United Kingdom
 Tel +44 (0)1249 822 222
 www.bilgroup.co.uk


 H Varley Ltd
 Unit 5 Century Park
 Pacific Rd, Broadheath,
 Altrincham, Cheshire
 WA14 5BJ
 Tel +44 (0)161 928 9617
 www.varley-castors.co.uk

DWG NO. **BZH100XPNBPL** REV **1**

BZH100XPNBPL SHEET 1 OF 1