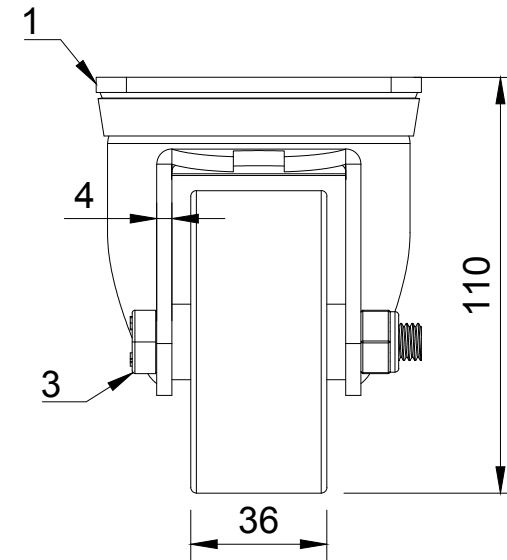



ITEM NO.	PART NUMBER	QTY
1	BZH80AS	1
2	BZH8036WPTBJM15	1
3	AXLE KIT	
	TH15X5X10	2
	HEXBOLTM10X70Z8.8	1
	NYLOCM10Z	1



UNLESS OTHERWISE SPECIFIED DIMENSIONS ARE IN MILLIMETRES	DRAWING DISCLAIMER	NAME	DATE	BILGroup			
Unspecified Tolerances Machining ± 0.25mm Fabrication ± 1mm	COPYRIGHT OF THIS DRAWING IS RESERVED BY BIL GROUP LTD. IT IS NOT REPRODUCED, COPIED, OR DISCLOSED TO A THIRD PARTY EITHER WHOLLY OR IN PART WITHOUT THE CONSENT IN WRITING OF BIL GROUP LTD	DRAWN BY	Matt	26/02/25	<small>BIL Group Ltd Porte Marsh Road Calne, Wiltshire, SN11 9BW United Kingdom Tel +44 (0)1249 822 222 www.bilgroup.co.uk</small>	 <small>H Varley Ltd Unit 5 Century Park Pacific Rd, Broadheath, Altrincham, Cheshire WA14 5BJ Tel +44 (0)161 928 9617 www.varley-castors.co.uk</small>	
		APPROVED BY	Kevin	26/02/25			
		SCALE	1:2		DWG NO.	BZH80PTBJ	REV 2
		WEIGHT	1.44kg			BZH80PTBJ	SHEET 1 OF 1