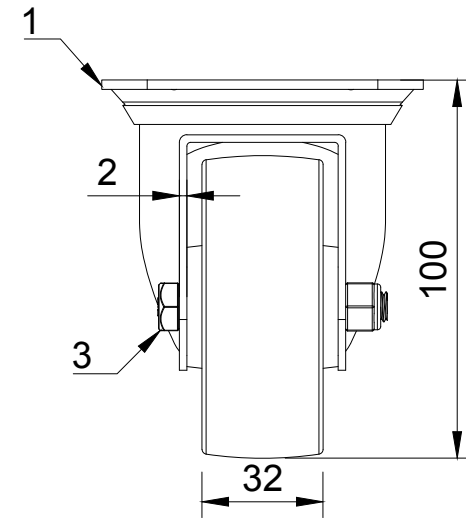


ITEM NO.	PART NUMBER	QTY
1	BZRMM80AS	1
2	BZMM80WPLRB/BLK	1
3	AXLE KIT	
	TUBEM12X4/CH	1
	HEXBOLTM8X55Z8.8	1
	NYLOCM8Z	1



UNLESS OTHERWISE SPECIFIED DIMENSIONS ARE IN MILLIMETRES

Unspecified Tolerances  
Machining ± 0.25mm  
Fabrication ± 1mm

DRAWING DISCLAIMER

COPYRIGHT OF THIS DRAWING IS RESERVED BY BIL GROUP LTD. IT IS NOT REPRODUCED, COPIED, OR DISCLOSED TO A THIRD PARTY EITHER WHOLLY OR IN PART WITHOUT THE CONSENT IN WRITING OF BIL GROUP LTD

	NAME	DATE
DRAWN BY	Matt	12/02/25
APPROVED BY	Kevin	12/02/25
SCALE	1:2	
WEIGHT	0.502kg	


 BIL Group Ltd  
 Porte Marsh Road  
 Calne, Wiltshire,  
 SN11 9BW  
 United Kingdom  
 Tel +44 (0)1249 822 222  
 www.bilgroup.co.uk


 VARLEY  
 H Varley Ltd  
 Unit 5 Century Park  
 Pacific Rd, Broadheath,  
 Altrincham, Cheshire  
 WA14 5BJ  
 Tel +44 (0)161 928 9617  
 www.varley-castors.co.uk

DWG NO. **BZRMM80PLB/BLK** REV **1**  
**BZRMM80PLB/BLK** SHEET 1 OF 1