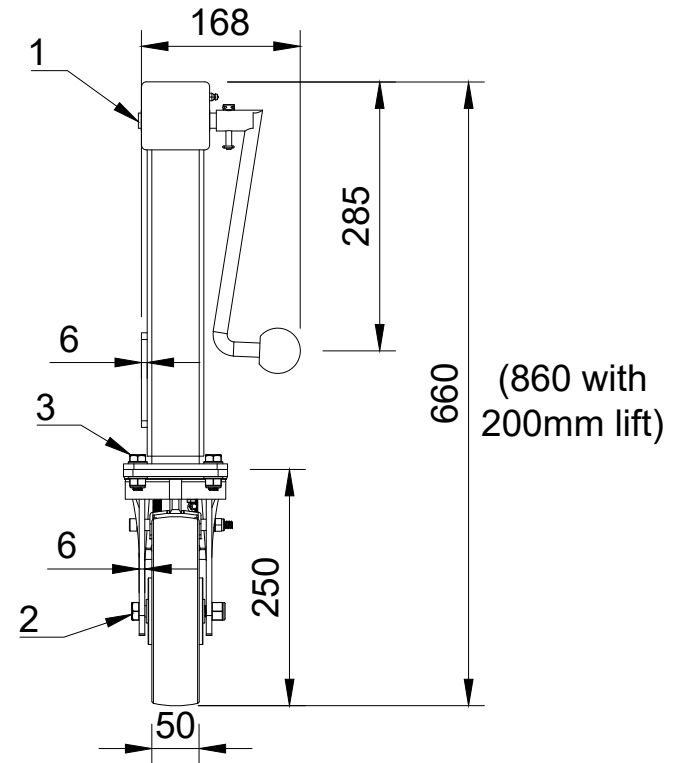


| ITEM NO. | PART NUMBER | QTY |
|----------|---------------|-----|
| 1 | JAZXHRH | 1 |
| 2 | BZK200NYBJSWB | 1 |
| 3 | FITTINGS | |
| | WM10X21X2 | 8 |
| | BOLTM10X30 | 4 |
| | NYLOCM10Z | 4 |



UNLESS OTHERWISE SPECIFIED DIMENSIONS ARE IN MILLIMETRES

Unspecified Tolerances
Machining ± 0.25mm
Fabrication ± 1mm

DRAWING DISCLAIMER

COPYRIGHT OF THIS DRAWING IS RESERVED BY BIL GROUP LTD. IT IS NOT REPRODUCED, COPIED, OR DISCLOSED TO A THIRD PARTY EITHER WHOLLY OR IN PART WITHOUT THE CONSENT IN WRITING OF BIL GROUP LTD

| | NAME | DATE |
|-------------|----------|----------|
| DRAWN BY | Matt | 07/08/24 |
| APPROVED BY | Kevin | 07/08/24 |
| SCALE | 1:8 | |
| WEIGHT | 12.216kg | |

| | | | |
|--|--|--------------------|-----|
| <p>BIL Group Ltd Porte Marsh Road Calne, Wiltshire, SN11 9BW United Kingdom Tel +44 (0)1249 822 222 www.bilgroup.co.uk</p> | <p>H Varley Ltd Unit 5 Century Park Pacific Rd, Broadheath, Altrincham, Cheshire WA14 5BJ Tel +44 (0)161 928 9617 www.varley-castors.co.uk</p> | DWG NO. | REV |
| | | JAZHSK200NYBJSWBRH | 1 |
| JAZHSK200NYBJSWBRH | | SHEET 1 OF 1 | |