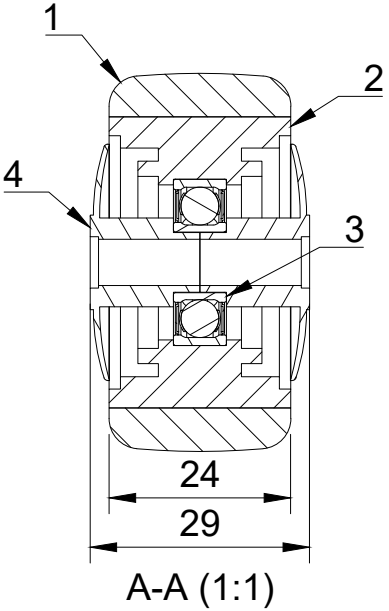
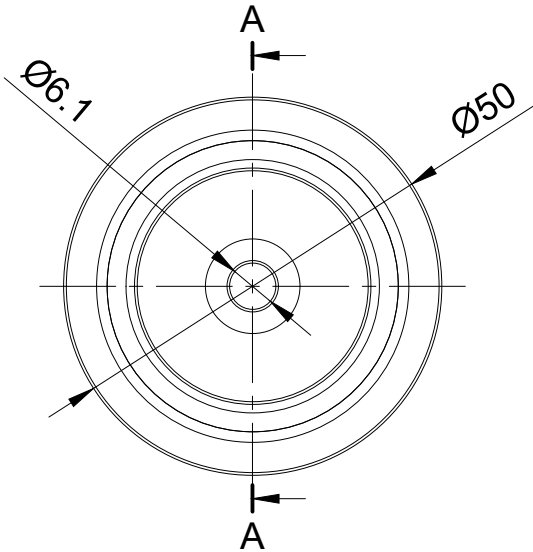






ITEM NO.	PART NUMBER	QTY
1	THERMOPLASTIC RUBBER TYRE	1
2	POLYPROPYLENE RIM	1
3	BEARING608SS	1
4	POLYPROPYLENE CAP	2



<p>UNLESS OTHERWISE SPECIFIED DIMENSIONS ARE IN MILLIMETRES</p> <p>Unspecified Tolerances Machining ± 0.25mm Fabrication ± 1mm</p>	<p>DRAWING DISCLAIMER</p> <p>COPYRIGHT OF THIS DRAWING IS RESERVED BY BIL GROUP LTD. IT IS NOT REPRODUCED, COPIED, OR DISCLOSED TO A THIRD PARTY EITHER WHOLLY OR IN PART WITHOUT THE CONSENT IN WRITING OF BIL GROUP LTD</p>	<p>NAME</p> <p>Matt</p>	<p>DATE</p> <p>29/05/24</p>	 <p>BIL Group Ltd Porte Marsh Road Calne, Wiltshire, SN11 9BW United Kingdom Tel +44 (0)1249 822 222 www.bilgroup.co.uk</p>	 <p>H Varley Ltd Unit 5 Century Park Pacific Rd, Broadheath, Altrincham, Cheshire WA14 5BJ Tel +44 (0)161 928 9617 www.varley-castors.co.uk</p>
		<p>DRAWN BY</p>	<p>APPROVED BY</p>		
		<p>SCALE</p>	<p>WEIGHT</p>	<p>DWG NO.</p>	<p>REV</p>
		<p>1:1</p>	<p>0.046kg</p>	<p>SSL50WGRBJM6</p>	<p>1</p>
		<p>SSL50WGRBJM6</p>	<p>SHEET 1 OF 1</p>		