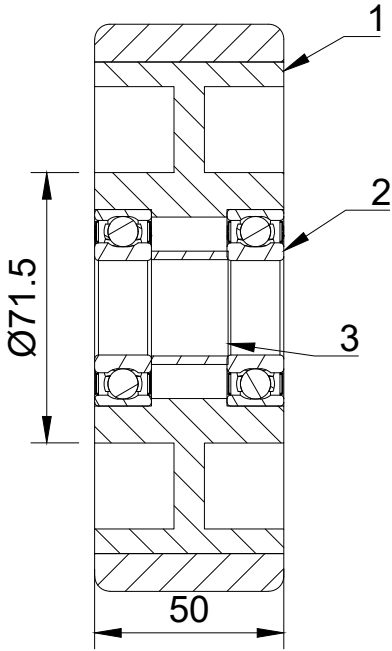
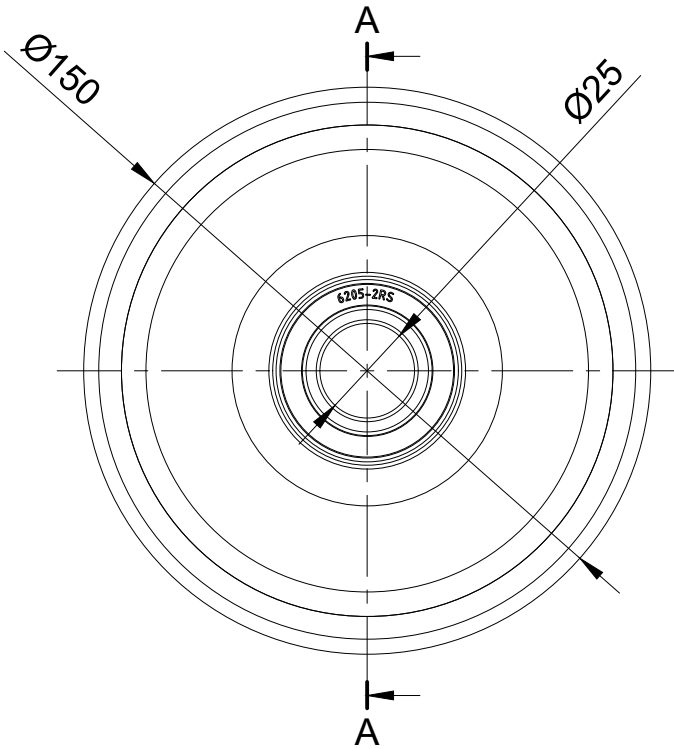


ITEM NO.	PART NUMBER	QTY
1	VPT1505020H7	1
2	BEARING6205	2
3	BSM25XM20	1



A-A (1:2)

UNLESS OTHERWISE SPECIFIED DIMENSIONS ARE IN MILLIMETRES

Unspecified Tolerances
Machining ± 0.25mm
Fabrication ± 1mm

DRAWING DISCLAIMER

COPYRIGHT OF THIS DRAWING IS RESERVED BY BIL GROUP LTD. IT IS NOT REPRODUCED, COPIED, OR DISCLOSED TO A THIRD PARTY EITHER WHOLLY OR IN PART WITHOUT THE CONSENT IN WRITING OF BIL GROUP LTD

	NAME	DATE
DRAWN BY	Matt	11/06/24
APPROVED BY	Kevin	11/06/24
SCALE	1:2	
WEIGHT		



BIL Group Ltd
Porte Marsh Road
Calne, Wiltshire,
SN11 9BW
United Kingdom
Tel +44 (0)1249 822 222
www.bilgroup.co.uk



H Varley Ltd
Unit 5 Century Park
Pacific Rd, Broadheath,
Altrincham, Cheshire
WA14 5BJ
Tel +44 (0)161 928 9617
www.varley-castors.co.uk

DWG NO.	VPT1505025BJ	REV	1
	VPT1505025BJ	SHEET 1 OF 1	