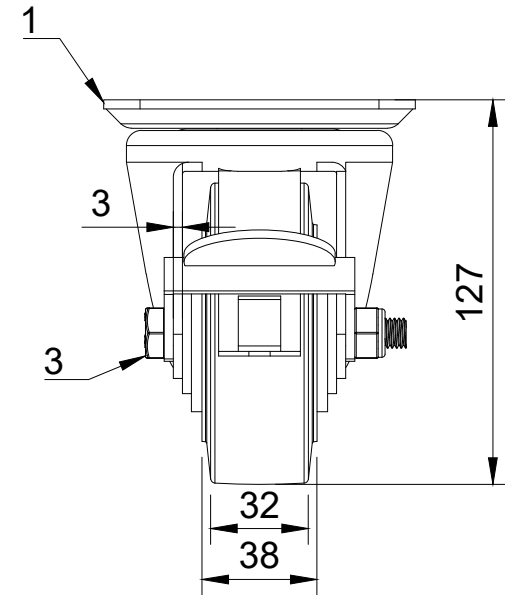


ITEM NO.	PART NUMBER	QTY
1	BZH100ASBRLP	1
2	BZMH100WCRBJM20	1
3	AXLE KIT	
	TUBEM20X50	1
	WP20X40X4BLK	2
	BOLTM10X80Z8.8	1
	NYLOCM10Z	1



UNLESS OTHERWISE SPECIFIED DIMENSIONS ARE IN MILLIMETRES

Unspecified Tolerances
Machining ± 0.25mm
Fabrication ± 1mm

DRAWING DISCLAIMER

COPYRIGHT OF THIS DRAWING IS RESERVED BY BIL GROUP LTD. IT IS NOT REPRODUCED, COPIED, OR DISCLOSED TO A THIRD PARTY EITHER WHOLLY OR IN PART WITHOUT THE CONSENT IN WRITING OF BIL GROUP LTD

	NAME	DATE
DRAWN BY	Matt	17/05/24
APPROVED BY	Nathan	17/05/24
SCALE	2:5	
WEIGHT	1.87kg	

BIL Group Ltd
Porte Marsh Road
Calne, Wiltshire,
SN11 9BW
United Kingdom
Tel +44 (0)1249 822 222
www.bilgroup.co.uk

BILGroup

H Varley Ltd
Unit 5 Century Park
Pacific Rd, Broadheath,
Altrincham, Cheshire
WA14 5BJ
Tel +44 (0)161 928 9617
www.varley-castors.co.uk

VARLEY

DWG NO.	REV
BZH100CRBJBRLP	1
BZH100CRBJBRLP	SHEET 1 OF 1