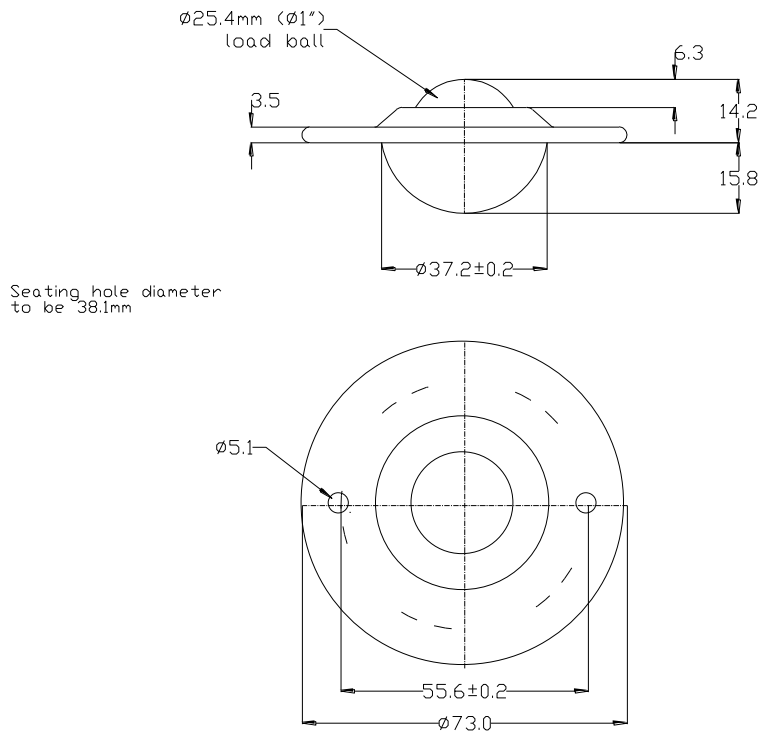


10001300 DATASHEET



PART No.	BALL SIZE (mm)	WEIGHT (kgs)	MAXIMUM DIAMETER (mm)	WORKING HEIGHT OF BALL (mm)	BALL EXPOSURE ABOVE OUTER RING (mm)	FLANGE THICKNESS (mm)	HOLE SIZE (mm)	HOLE CENTRES PCD (mm)
10001300	$\varnothing 25.4$	0.175	$\varnothing 73.0$	14.2	6.3	3.5	$\varnothing 5.1$	55.6 +/- 0.2

MAXIMUM DYNAMIC LOADING

Type 13 with carbon steel load ball 55kgs ball up, 25kgs ball down

MATERIALS

Body - Carbon steel with zinc plated finish

Load ball – Carbon steel with hardness of 60 – 62HRC self colour finish

Small balls – Chrome steel with hardness of 60 – 65HRC self colour finish

Seal – Woollen felt

KEY FEATURES

Low profile

x2 fixing holes in flange for securing unit

Single dirt exit hole in base of unit

Operating temperature 70°C continuous to 100°C intermittent