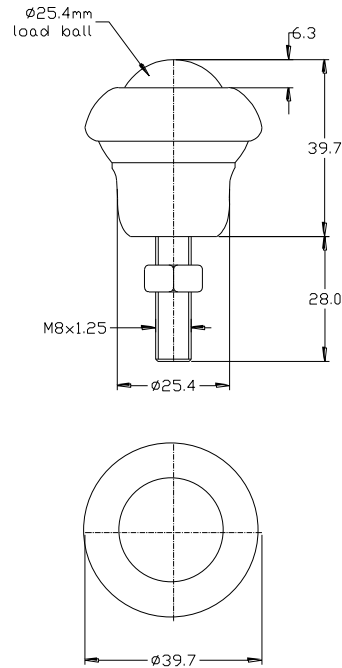


10031428 DATASHEET



PART No.	BALL SIZE (mm)	MAX TORQUE ON NUT (Nm)	WEIGHT (kgs)	MAXIMUM DIAMETER (mm)	WORKING HEIGHT OF BALL (mm)	BALL EXPOSURE ABOVE OUTER RING (mm)	BODY DIAMETER (mm)	THREAD SIZE	THREAD LENGTH (mm)
10031428	$\phi 25.4$	15	0.09	$\phi 39.7$	39.7	6.3	$\phi 25.4$	M8x1.25	28

MAXIMUM DYNAMIC LOADING

Type 13 Carbon Steel Bearings 55kgs ball up, 25kgs ball down

MATERIALS

Body - Carbon steel with zinc plated finish

Screw thread – Carbon steel with zinc plated finish

Load ball – Nylon 6,6 with hardness of 85 shore D white colour

Small balls – Stainless steel AISI420C with hardness of 52 - 58HRC with self colour finish

Seal – Woollen felt

KEY FEATURES

M8 screw thread fixing for single hole fixing

Nylon load ball for light load applications sensitive to marking

Maximum operating temperature of 70°C continuous to 80°C intermittent