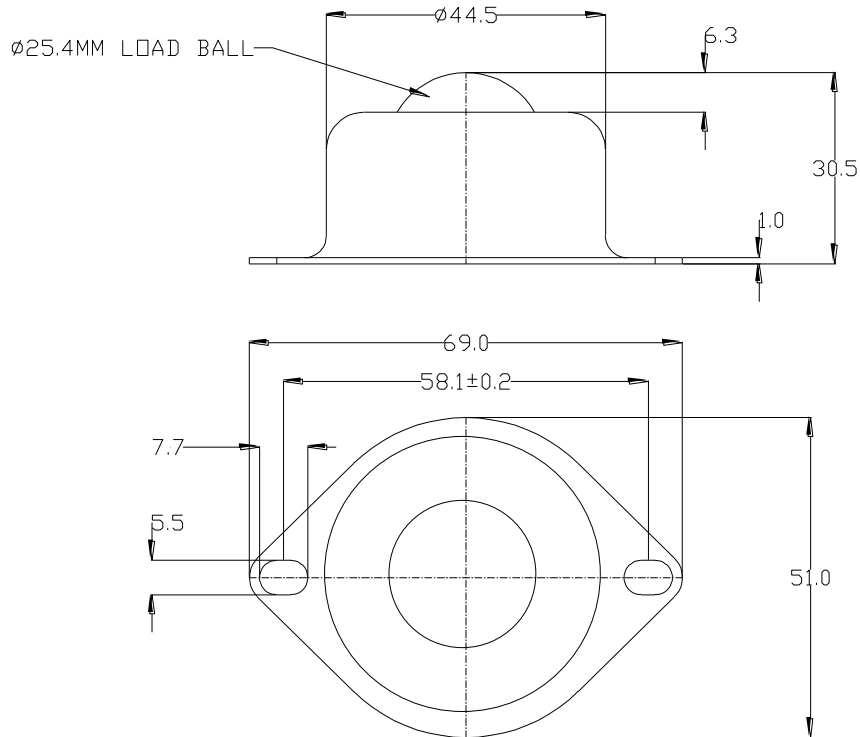


## 10061500 DATASHEET



PART No.	BALL SIZE (mm)	WEIGHT (kgs)	BODY DIAMETER (mm)	WORKING HEIGHT OF BALL (mm)	BALL EXPOSURE ABOVE OUTER RING (mm)	FLANGE THICKNESS (mm)	SLOTTED HOLE SIZE (mm)	SLOTTED HOLE CENTRES (mm)
10061500	$\varnothing 25.4$	0.16	$\varnothing 44.5$	30.5	6.3	1.0	5.5 x 7.7	58.1

### MAXIMUM DYNAMIC LOADING

Type 15 with stainless steel bearings and pressings 55kgs ball up 25kgs ball down

### MATERIALS

Body – AISI304 stainless steel with self colour finish

Load ball – AISI420C stainless steel with hardness of 52 – 58HRC self colour finish

Small balls - AISI420C stainless steel with hardness of 52 – 58HRC self colour finish

Seal - Woollen felt

### KEY FEATURES

Type 15 stainless steel body and balls for good corrosion resistance

2x slotted fixing holes offer alternative hole centres for securing unit

Single dirt exit hole in base of unit

Maximum operating temperature 70°C continuous to 100°C intermittent