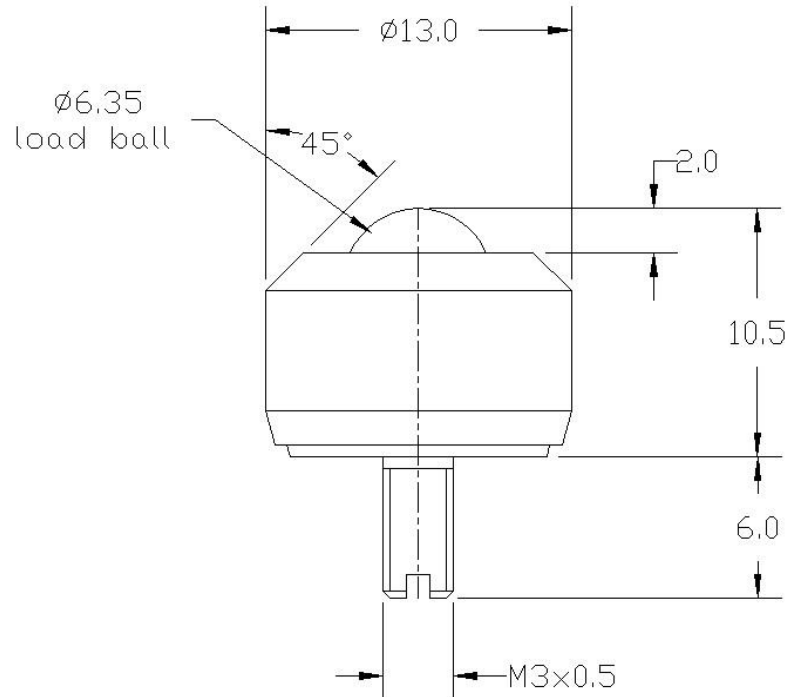




ALWAYSE

Ball Unit Solutions

11MIO617 DATASHEET



REF No.	BALL SIZE (mm)	WEIGHT (kgs)	MAXIMUM DIAMETER (mm)	WORKING HEIGHT OF BALL (mm)	BALL EXPOSURE ABOVE OUTER RING (mm)	THREAD SIZE	THREAD LENGTH (mm)
11MIO617	Ø6.3	0.008	Ø13	10.5	2	M3 x 0.5	6.0

MAXIMUM DYNAMIC LOADING

Type 17 Aluminium outer ring, stainless steel body and ball bearings 10kgs ball up with maximum conveying speed of 0.25m/sec

MATERIALS

Body and M3 screw thread – BS970 416 S21 stainless steel with self colour finish

Balls – AISI420C stainless steel with hardness of 52 – 58HRC self colour finish

Outer ring – Aluminium 6026 T9 with self colour finish

KEY FEATURES

Angled outer ring

M3 screw thread fixing

MAXIMUM OPERATING TEMPERATURE

80°C continuous to 100°C intermittent