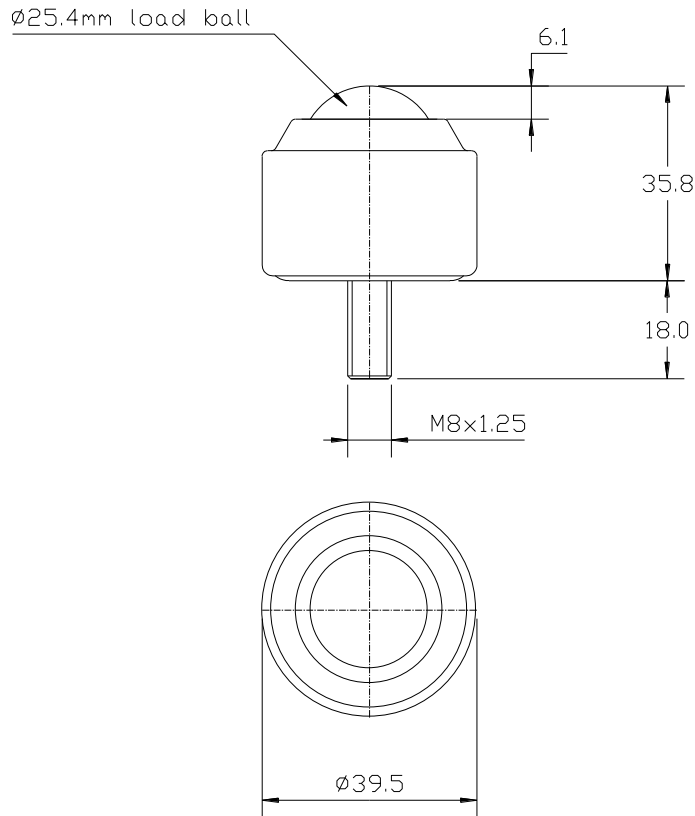




### 15011318 DATASHEET



PART No.	BALL SIZE (mm)	MAXIMUM TIGHTENING TORQUE (Nm)	WEIGHT (kgs)	MAXIMUM DIAMETER (mm)	WORKING HEIGHT OF BALL (mm)	BALL EXPOSURE ABOVE OUTER RING (mm)	SCREW THREAD SIZE (mm)	SCREW THREAD LENGTH (mm)
15011318	Ø25.4	15	0.18	Ø39.5	35.8	6.1	M8 x 1.25	18

#### MAXIMUM DYNAMIC LOADING

Type 13 Chrome Steel Bearings 100kgs ball up, 50kgs ball down

#### MATERIALS

Body – Carbon steel with zinc plated finish

Screw thread – Carbon steel with zinc plated finish

Balls – AISI52100 chrome steel with hardness of 60 - 65HRC self colour finish

Seal - Polyurethane

#### KEY FEATURES

Maximum operating temperature of 70° C continuous to 90° C intermittent  
Unit assembled with knife edge polyurethane scraper seal on load ball

5<sup>th</sup> January 2012

15011318 DATASHEET

X:\BALL UNITS\STANDARD BALL UNITS\Thread fixing BTUs\150113\Reports

Ver 1 Iss 1

Page 1 of 1