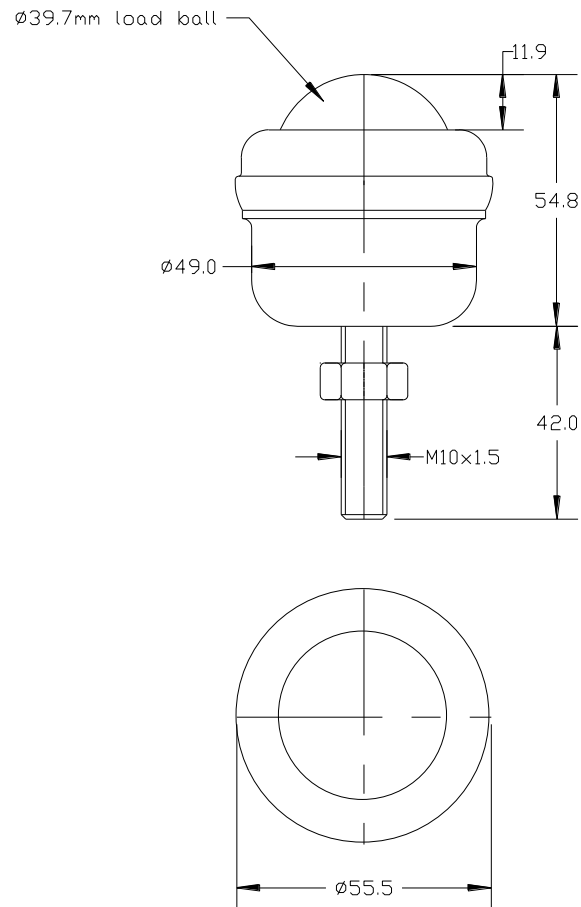


## 20051542 DATASHEET



PART No.	BALL SIZE (mm)	WEIGHT (Kgs)	MAXIMUM DIAMETER (mm)	WORKING HEIGHT OF BALL (mm)	BALL EXPOSURE ABOVE OUTER RING (mm)	BODY DIAMETER (mm)	THREAD SIZE (mm)	THREAD LENGTH (mm)
20051542	Ø39.7	0.46	Ø55.5	54.8	11.9	Ø49	M10x1.5	42

### MAXIMUM DYNAMIC LOADING

Type 15 Stainless steel bearings 140kgs ball up, 60kgs ball down

### MATERIALS

Body – Stainless steel AISI304 with self colour finish

M10x1.5mm screw thread – Stainless steel AISI304 with self colour finish

Balls – Stainless steel AISI420C with hardness of 52 – 58HRC and self colour finish

Seal – Woollen felt

### KEY FEATURES

M10x1.5mm screw thread for easy single hole fixing

Maximum tightening torque on nut 20Nm

Maximum operating temperature of 70 C continuous to 100 C intermittent