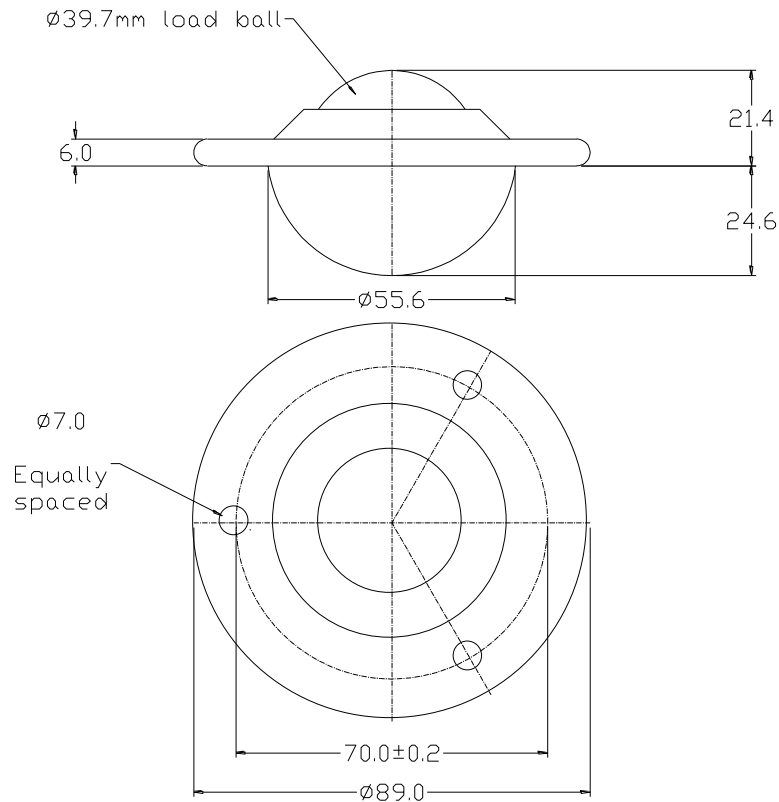


201113 DATASHEET



General tolerance unless stated ± 0.3 mm

REF No.	BALL SIZE (mm)	WEIGHT (Kgs)	MAXIMUM DIAMETER (mm)	WORKING HEIGHT OF BALL (mm)	FLANGE THICKNESS (mm)	HOLE DIAMETER (mm)	HOLE CENTRES PCD (mm)	SEATING HOLE DIAMETER (mm)
201113	$\phi 39.7$	0.515	$\phi 89.0$	21.4	6.0	$\phi 7.0$	70.0 \pm 0.2	$\phi 56.5$

MAXIMUM DYNAMIC LOADING – BALL UP

Type 13 Chrome steel balls and carbon steel zinc plated body – 140kgs

MATERIALS

Body - Carbon steel with zinc plated finish

Balls – AISI52100 chrome steel hardened to 60 – 62HRC with self colour finish

Seal – Woollen felt oiled with ISO68 oil

KEY FEATURES

Single dirt exit hole in base for removal of dirt and debris

Low profile design

3 hole equally spaced fixing