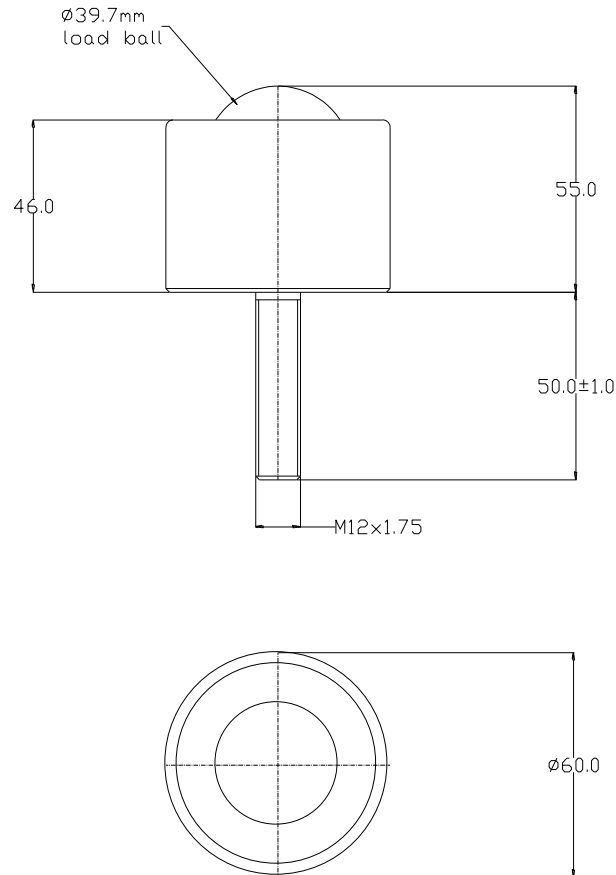


20192313 DATASHEET



General tolerance unless stated +/-0.3mm

PART No.	BALL SIZE (mm)	WEIGHT (kgs)	MAXIMUM DIAMETER (mm)	WORKING HEIGHT OF BALL (mm)	THREAD SIZE	LENGTH OF THREAD (mm)	BASE TO TOP OF BODY (mm)
20192313	$\varnothing 39.7$	0.9	$\varnothing 60.0$	55.0	M12 x 1.75	50.0	46.0

MAXIMUM DYNAMIC LOADING – BALL UP

Type 13 Carbon Steel Bearings 500kgs

MATERIALS

Body and screw thread - Carbon steel with chemical black finish

Load ball - Carbon steel with hardness of 60 – 62HRC with self-colour finish

Seal – Woollen felt

KEY FEATURES

M12 thread fixing

Solid steel machined body and screw thread for increased strength

Maximum operating temperature of 70 C continuous to 100 C intermittent