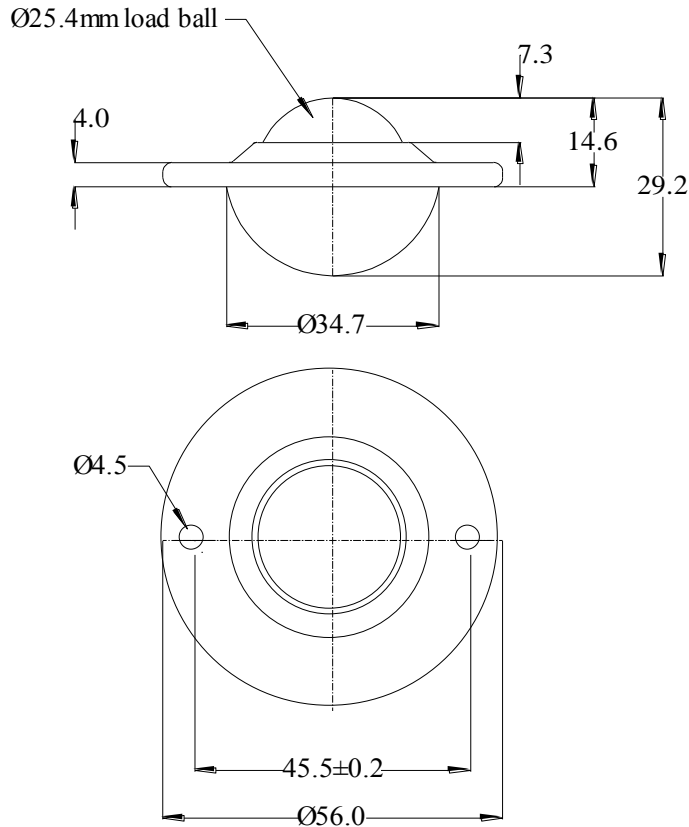


30251300 DATASHEET



REF No.	BALL SIZE (mm)	WEIGHT (kgs)	MAXIMUM DIAMETER (mm)	WORKING HEIGHT OF BALL (mm)	BALL EXPOSURE ABOVE OUTER RING (mm)	BODY DIAMETER (mm)	FLANGE THICKNESS (mm)	FIXING HOLE DIAMETER (mm)	FIXING HOLE CENTRES (mm)
30251300	Ø25.4	0.135	Ø56.0	14.6	7.3	Ø34.7	4.0	Ø4.5	45.5 +/- 0.2

MAXIMUM DYNAMIC LOADING – LOAD UP

Type 13 Carbon steel body and balls – 55kgs

MATERIALS

Body - Carbon steel body with zinc plated finish

Balls - Carbon steel balls with hardness of 60HRC and self colour finish

KEY FEATURES

Low profile

2 hole fixing

No seal

Dirt exit hole