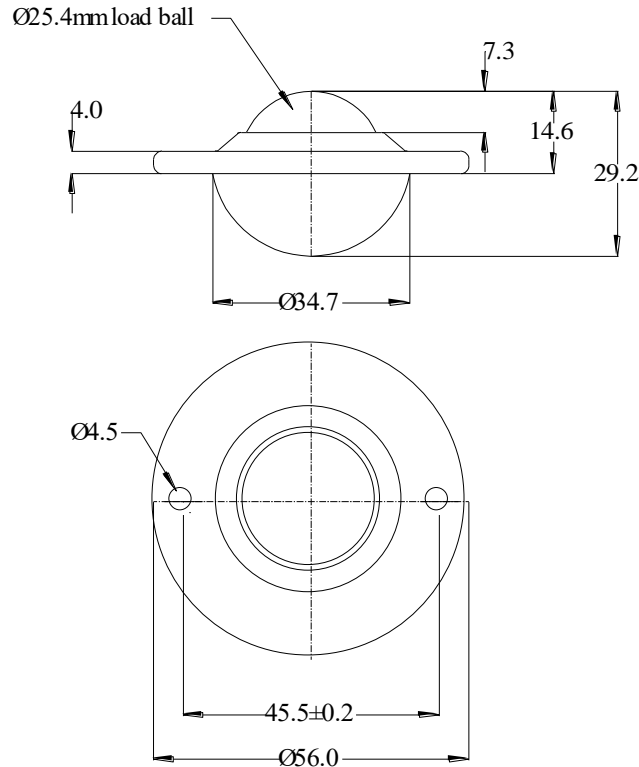




### 30251400 DATASHEET



REF No.	BALL SIZE (mm)	WEIGHT (kgs)	MAXIMUM DIAMETER (mm)	WORKING HEIGHT OF BALL (mm)	BALL EXPOSURE ABOVE OUTER RING (mm)	BODY DIAMETER (mm)	FLANGE THICKNESS (mm)	FIXING HOLE DIAMETER (mm)	FIXING HOLE CENTRES (mm)
30251400	Ø25.4	0.07	Ø56.0	14.6	7.3	Ø34.7	4.0	Ø4.5	45.5 +/- 0.2

#### MAXIMUM DYNAMIC LOADING – BALL UP

Type 14 Nylon load ball – 25kgs

#### MATERIALS

Body - Carbon steel body with zinc plated finish

Load ball – Nylon 6,6 with hardness of 85 shore D white colour

Small balls - Stainless steel AISI420C with hardness of 52 – 58HRC and self-colour finish

#### KEY FEATURES

Nylon load ball for light load applications where the item to be moved is sensitive to marking

2 hole fixing

No seal

Dirt exit hole

Maximum operating temperature 80°C with 50% reduction in load rating