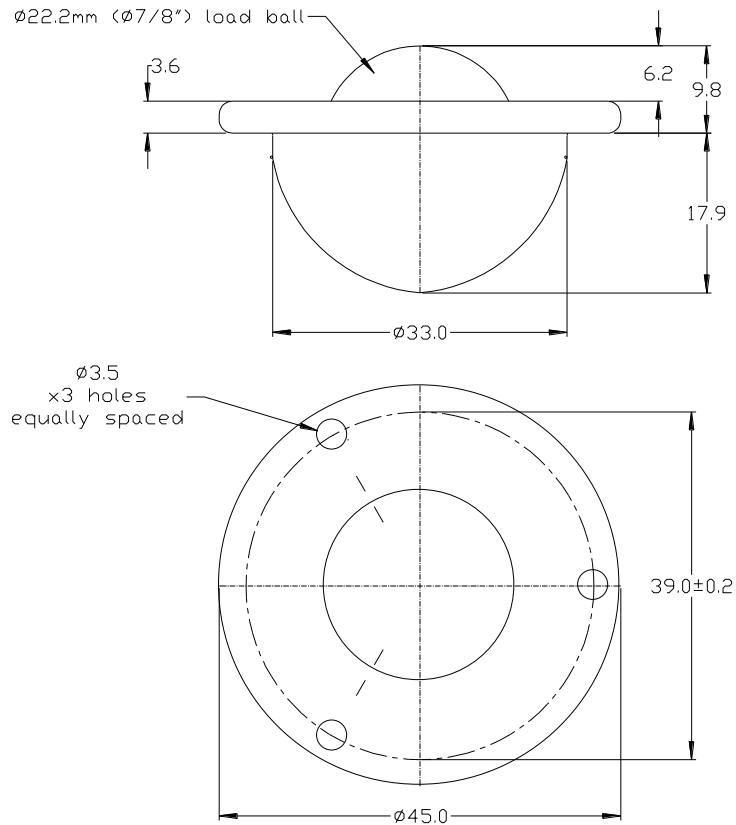




332213HD DATASHEET



PART No.	BALL SIZE (mm)	WEIGHT (kgs)	MAXIMUM DIAMETER (mm)	WORKING HEIGHT OF BALL (mm)	BALL EXPOSURE ABOVE OUTER RING (mm)	FLANGE THICKNESS (mm)	HOLE SIZE (mm)	HOLE CENTRES PCD (mm)
332213HD	Ø22.2	0.1	Ø45.0	9.8	6.2	3.6	Ø3.5	39 +/- 0.2

MAXIMUM DYNAMIC LOADING

Type 13 with carbon steel bearings 120kgs ball up, 60kgs ball down

MATERIALS

Body - Carbon steel with zinc plated finish

Balls – Carbon steel with hardness of 60 – 62HRC with self colour finish

Seal - Woollen felt oiled with ISO68 oil

KEY FEATURES

Low profile

3 hole fixing in flange

Single dirt exit hole in base of unit

Maximum operating temperature 70°C continuous or 100°C intermittent