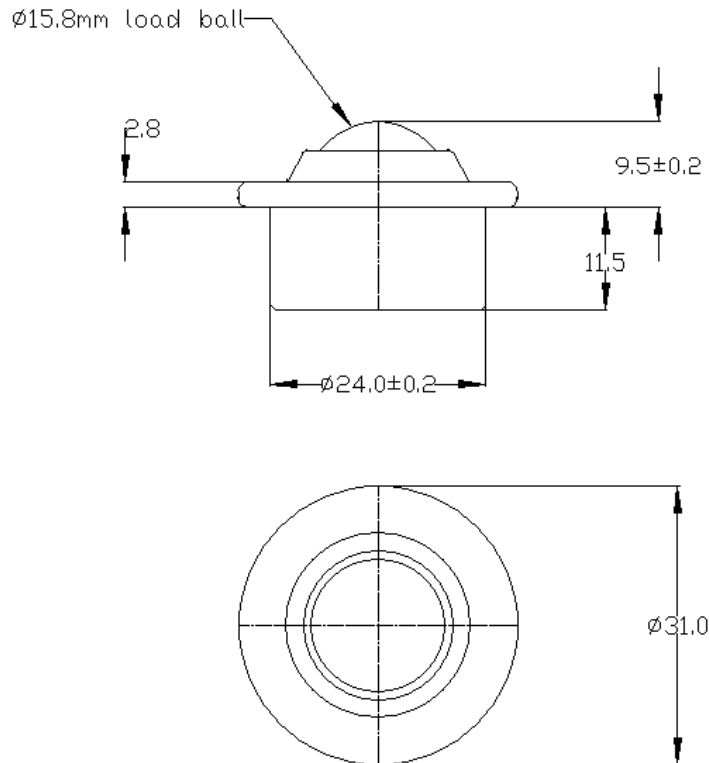




515013 DATASHEET



REF No.	BALL SIZE (mm)	WEIGHT (Kgs)	MAXIMUM DIAMETER (mm)	WORKING HEIGHT OF BALL (mm)	BALL EXPOSURE ABOVE OUTER RING (mm)	BODY DIAMETER (mm)	FLANGE THICKNESS (mm)	OVERALL HEIGHT (mm)
515013	Ø15.8	0.043	Ø31.0	9.5 +/- 0.2	3.2	Ø24.0 +/- 0.2	2.8	21.0

MAXIMUM DYNAMIC LOADING – BALL UP

Type 13 Carbon steel bearings 60kgs

MATERIALS

Body – Carbon steel with zinc plated finish

Balls – AISI52100 chrome steel with hardness of 60HRC self colour finish

Seal - Woollen felt to BS4060 2006 A97/5W density 40

KEY FEATURES

Low profile

Maximum operating temperature 70°C continuous to 100°C intermittent