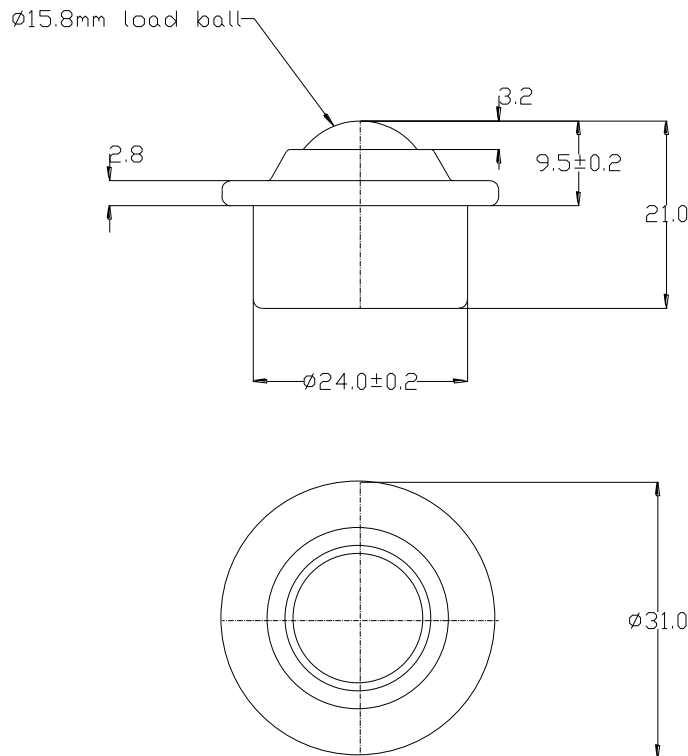


515015 DATASHEET



REF No.	BALL SIZE (mm)	WEIGHT (Kgs)	MAXIMUM DIAMETER (mm)	WORKING HEIGHT OF BALL (mm)	BALL EXPOSURE ABOVE OUTER RING (mm)	BODY DIAMETER (mm)	FLANGE THICKNESS (mm)	OVERALL HEIGHT (mm)
515015	Ø15.8	0.043	Ø31.0	9.5 +/- 0.2	3.2	Ø24.0 +/- 0.2	2.8	21.0

MAXIMUM DYNAMIC LOADING – BALL UP

Type 15 Stainless steel body and balls 38kgs ball up

MATERIALS

Body – Stainless steel AISI304 with self colour finish

Load ball – Stainless steel AISI420C with hardness of 52-58HRC self colour finish

Small balls – Stainless steel AISI420C with hardness of 52-58HRC self colour finish

Seal – Woollen felt

KEY FEATURES

Low profile

Completely stainless steel for corrosion resistance

Maximum operating temperature 100°C continuous