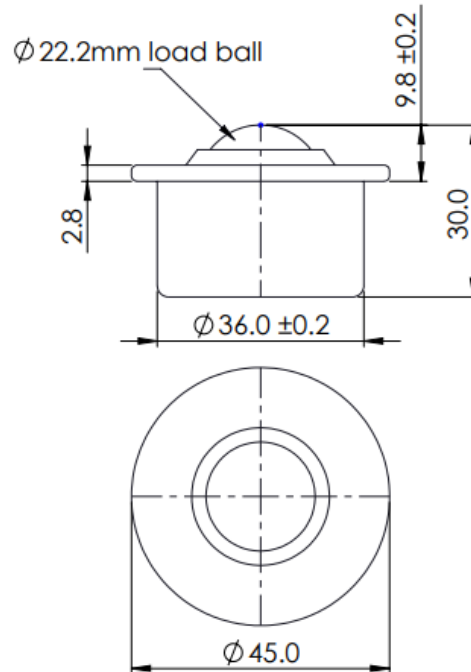




522013 DATASHEET



REF No.	BALL SIZE (mm)	WEIGHT (Kgs)	MAXIMUM DIAMETER (mm)	WORKING HEIGHT OF BALL (mm)	BODY DIAMETER (mm)	FLANGE THICKNESS (mm)	OVERALL HEIGHT (mm)
522013	22.2	0.132	45.0	9.8 +/- 0.2	36.0 +/- 0.2	2.8	30.0

MAXIMUM DYNAMIC LOADING –

Type 13 – Carbon steel body and chrome steel balls 160kgs ball up

MATERIALS

Body - Carbon steel with BZP finish

Outer ring – Carbon steel with BZP finish

Balls – AISI52100 Chrome steel hardened to 60 – 65HRC with self colour finish

Seal - Woollen felt oiled with ISO68 oil

KEY FEATURES

Low profile

Felt seal

Various fixing clips available for mounting purposes

Maximum temperature 80°C continuous 100°C intermittent