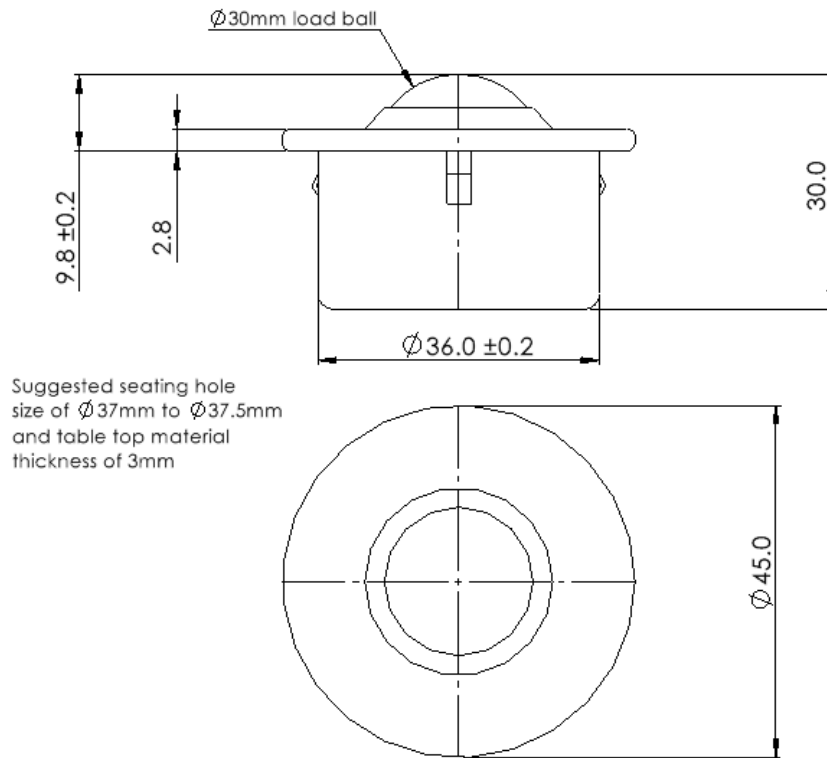




522213 DATASHEET



REF No.	BALL SIZE (mm)	WEIGHT (kgs)	FLANGE DIAMETER (mm)	WORKING HEIGHT OF BALL (mm)	BODY DIAMETER (mm)	FLANGE THICKNESS (mm)	OVERALL HEIGHT (mm)
522213	$\varnothing 22.2$	0.132	$\varnothing 45.0$	9.8 +/- 0.2	$\varnothing 36.0$ +/- 0.2	2.8	30.0

MAXIMUM DYNAMIC LOADING –

Type 13 Carbon Steel Bearings 160kgs ball up

MATERIALS

Body - Carbon steel body with zinc plated finish

Balls – AISI52100 chrome steel balls with hardness of 60HRC and self colour finish

Seal - Woollen felt oiled with ISO68 oil

KEY FEATURES

Low profile

Easy fitting with a 3 prong built-in fixing clip from top face of ball table

Suggested seating hole diameter $\varnothing 37$ mm to $\varnothing 37.5$ mm with a table top material thickness of 3mm

Maximum temperature 80°C continuous 100°C intermittent