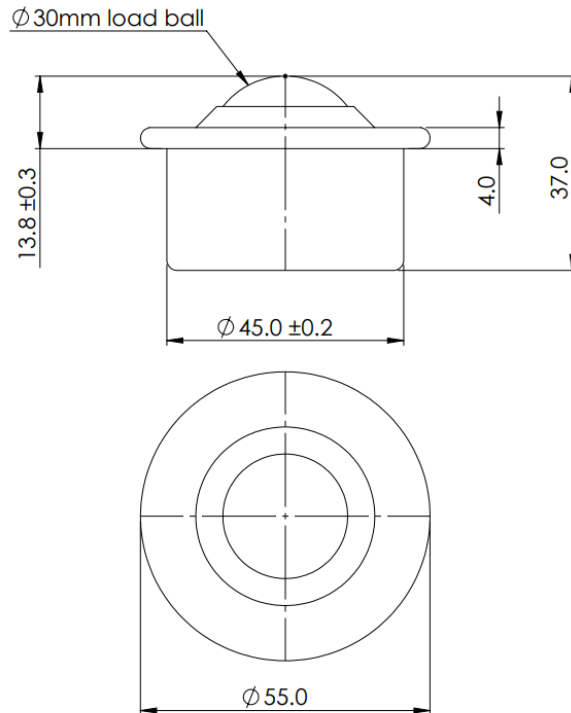


## 530015 DATASHEET



REF No.	BALL SIZE (mm)	WEIGHT (kgs)	FLANGE DIAMETER (mm)	WORKING HEIGHT OF BALL (mm)	BODY DIAMETER (mm)	FLANGE THICKNESS (mm)	OVERALL HEIGHT (mm)
530015	$\phi 30$	0.278	$\phi 55.0$	13.8 +/- 0.3	$\phi 45.0$ +/- 0.2	4.0	37.0

### MAXIMUM DYNAMIC LOADING –

Type 15 Stainless steel bearings and body - 200kgs ball up, 100kgs ball down

### MATERIALS

Body – AISI304 stainless steel with self colour finish

Balls – AISI420C stainless steel with hardness of 52-58HRC self-colour finish

Seal - Woollen felt

### KEY FEATURES

Body and balls from stainless steel for corrosion resistance

Low profile

Various fixing clips available for mounting purposes

Maximum service temperature 70 °C continuous 100 °C intermittent