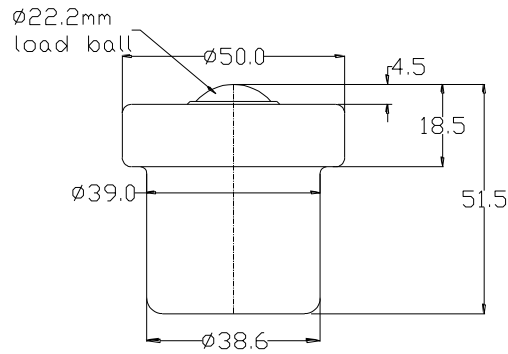




532013 DATASHEET



PART No.	BALL SIZE (mm)	WEIGHT (kgs)	MAXIMUM DIAMETER (mm)	WORKING HEIGHT OF BALL (mm)	BALL EXPOSURE ABOVE OUTER RING (mm)	FLANGE THICKNESS (mm)	BODY DIAMETER (mm)	OVERALL LENGTH (mm)
532013	$\phi 22.2$	0.26	$\phi 50.0$	18.5	4.5	14.0	$\phi 39.0$	51.5

MAXIMUM DYNAMIC LOADING

Type 13 with carbon steel bearings with 72kgs support load and 160kgs final load

MATERIALS

Housing - Carbon steel with zinc plated finish

Balls – Carbon steel with hardness of 60HRC self colour finish

Spring – Carbon spring steel with self colour finish

Circlip – Carbon spring steel with phosphate finish

KEY FEATURES

Low profile

Spring loaded with load ball fully depressing under load

Maximum temperature 100°C